



*Find out why McKee Homes  
is the perfect fit for you!*

*Your family home. Our family business.*

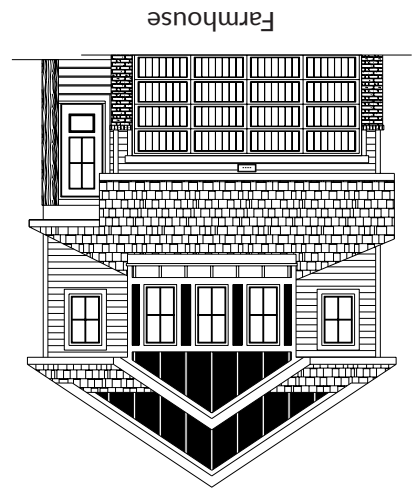
# McKEE HOMES



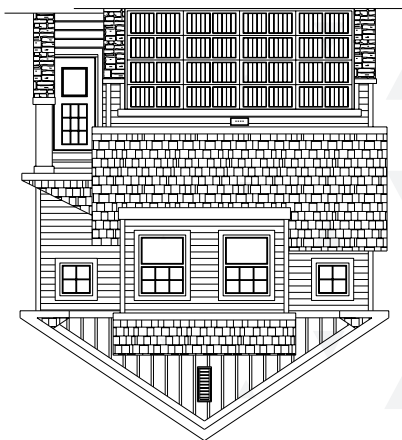
Honesty

Quality

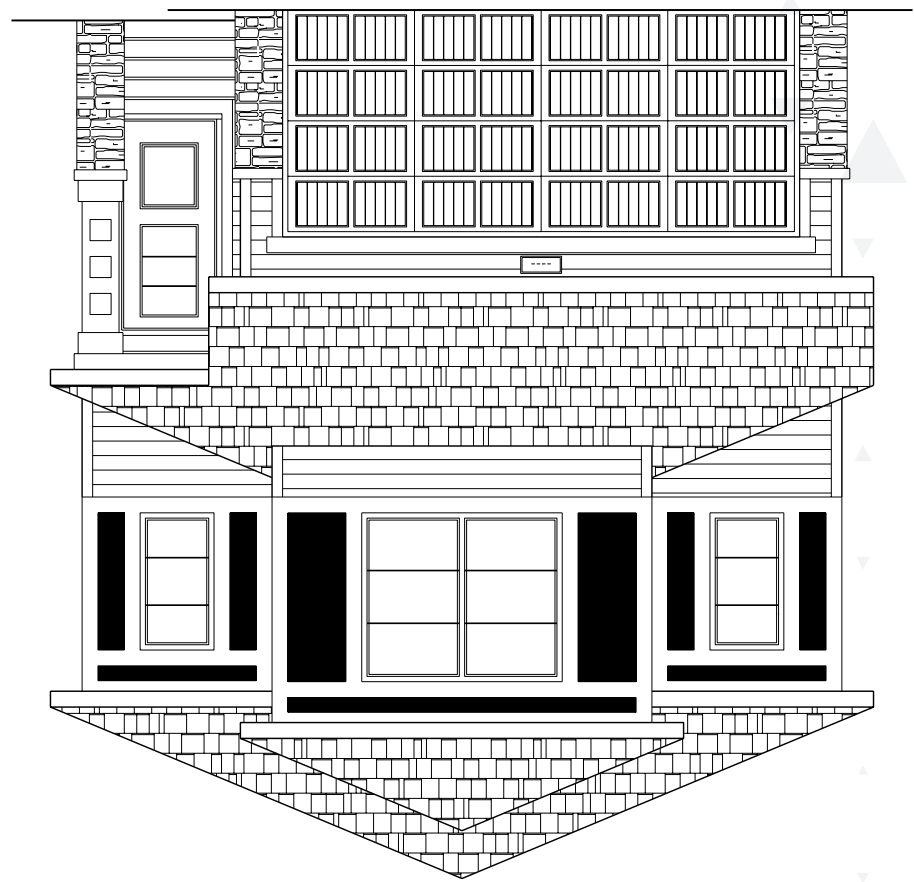
Integrity



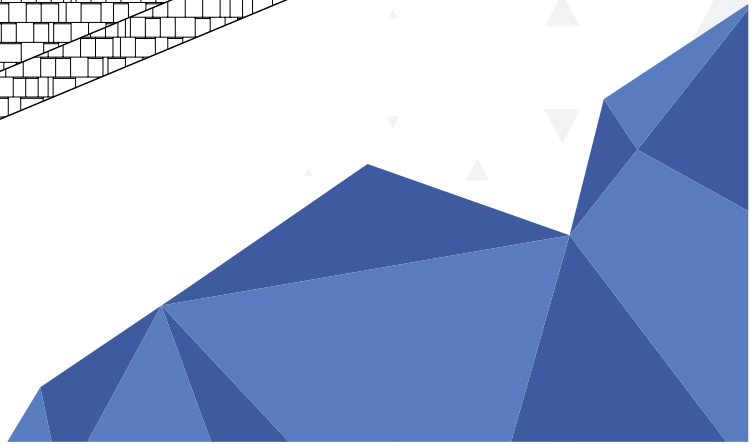
Farmhouse



Craftsman



Prairie



# Capecastle N ZLL

2148 SQ.FT. | 24'0" Wide | 3 Beds | 2.5 Baths

## Plan Options

### Main Floor

972 SQ.FT.

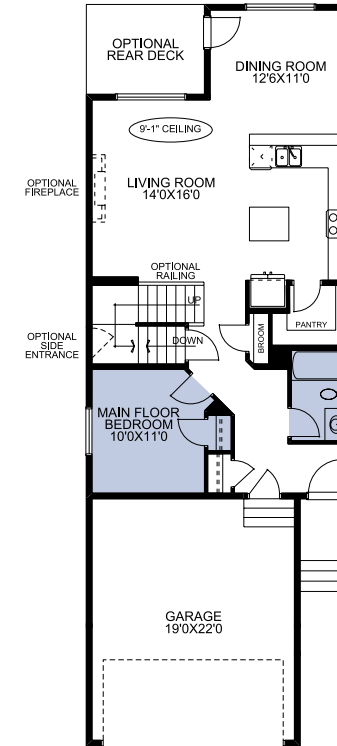
### Upper Floor

1176 SQ.FT.

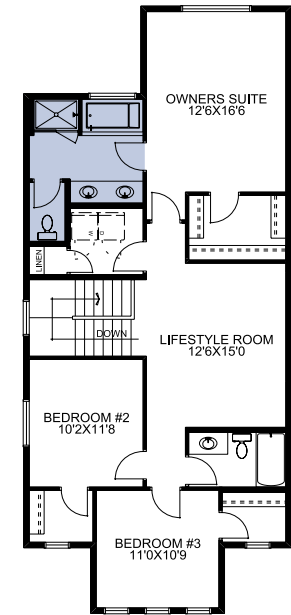
### Optional Basement Suite

698 SQ.FT.

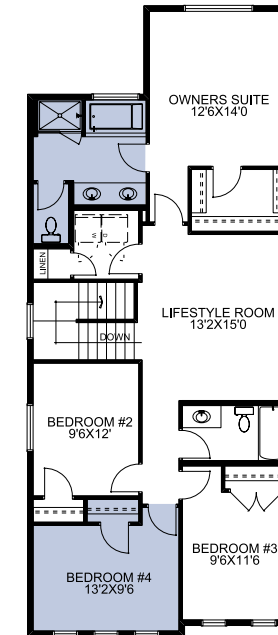
Main Floor  
972 SQ. FT.



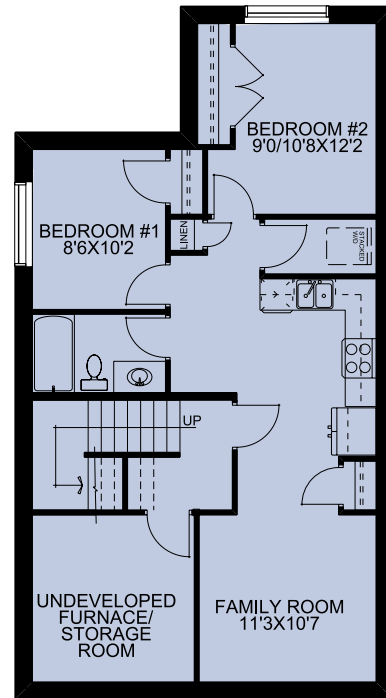
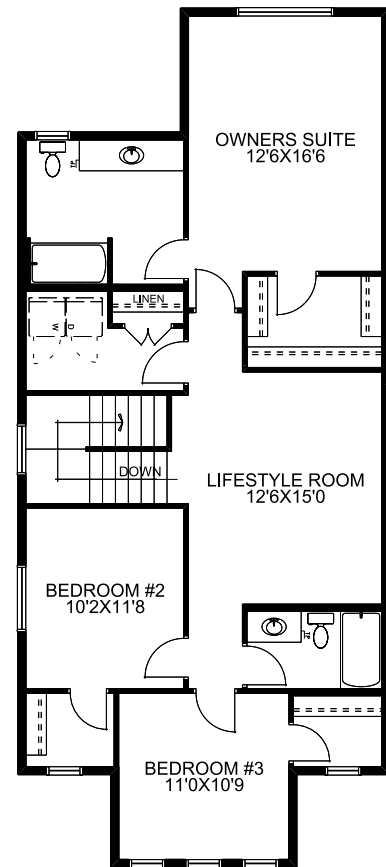
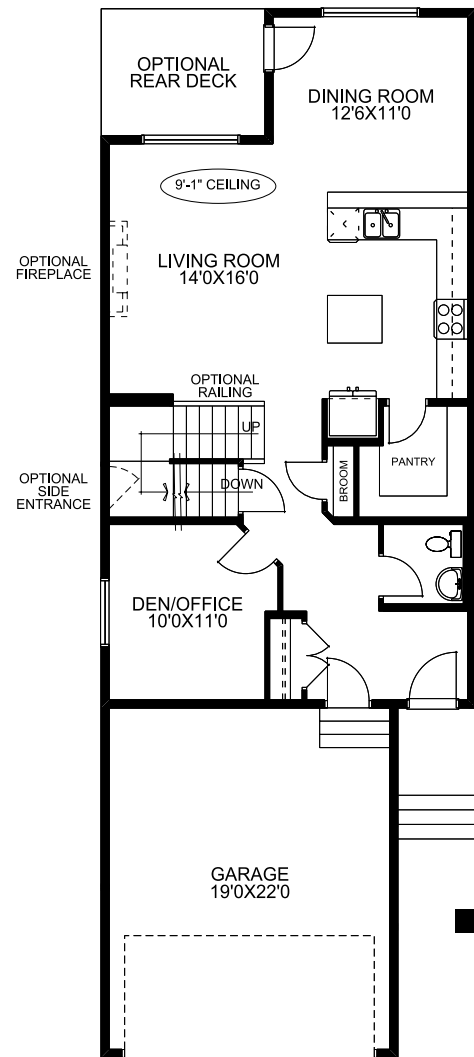
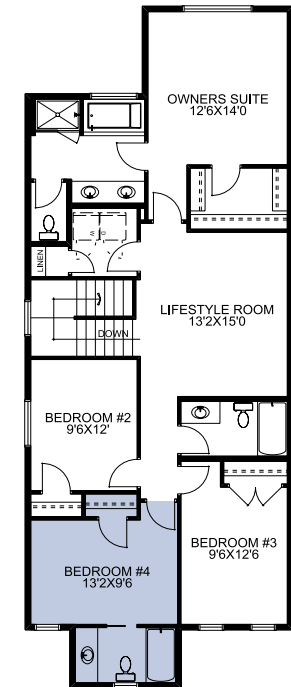
Upper Floor  
1176 SQ. FT.



Upper Floor  
1274 SQ. FT.



Upper Floor  
1337 SQ. FT.



Don't settle for ordinary when you can have a custom built home perfected for you.

\*\*Plans are subject to change at any time, so it's important to consult with your salesperson for the most accurate and up-to-date information. Please note that all square footages provided are for marketing purposes only, and the availability of specific elevations may differ depending on the area or community in question.

\*\*Plans are subject to change at any time, so it's important to consult with your salesperson for the most accurate and up-to-date information. Please note that all square footages provided are for marketing purposes only, and the availability of specific elevations may differ depending on the area or community in question.