



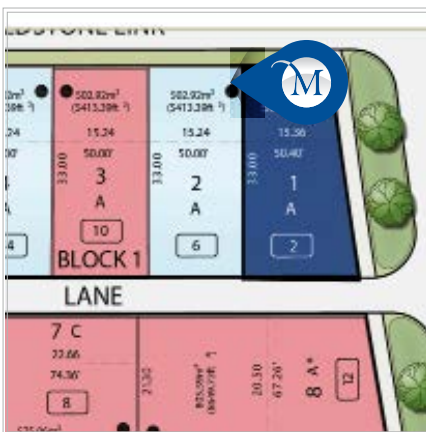
2635 SQFT 4 3.5

Possession: 2026

Price: See Website

6 Fieldstone Link : The Stangford Lough II

Home Features:



- Durable Hardie Board® Exterior
- Spacious Triple Car Garage
- Beautifully Custom-Designed Main Kitchen
- Custom-Designed Prep Kitchen
- Floor-to-Ceiling Kitchen Cabinetry
- Luxury Vinyl Plank Flooring Throughout the Main Floor
- Elegant Spindle Railing on the Interior Staircase
- Built-In Stainless Steel Kitchen Appliance Package
- Stylish Tray Ceiling in the Lifestyle Room
- Basement Legal Suite Rough-In
- MDF Shelving Throughout the Home
- Built Green® Certified Construction
- ...And So Much More!

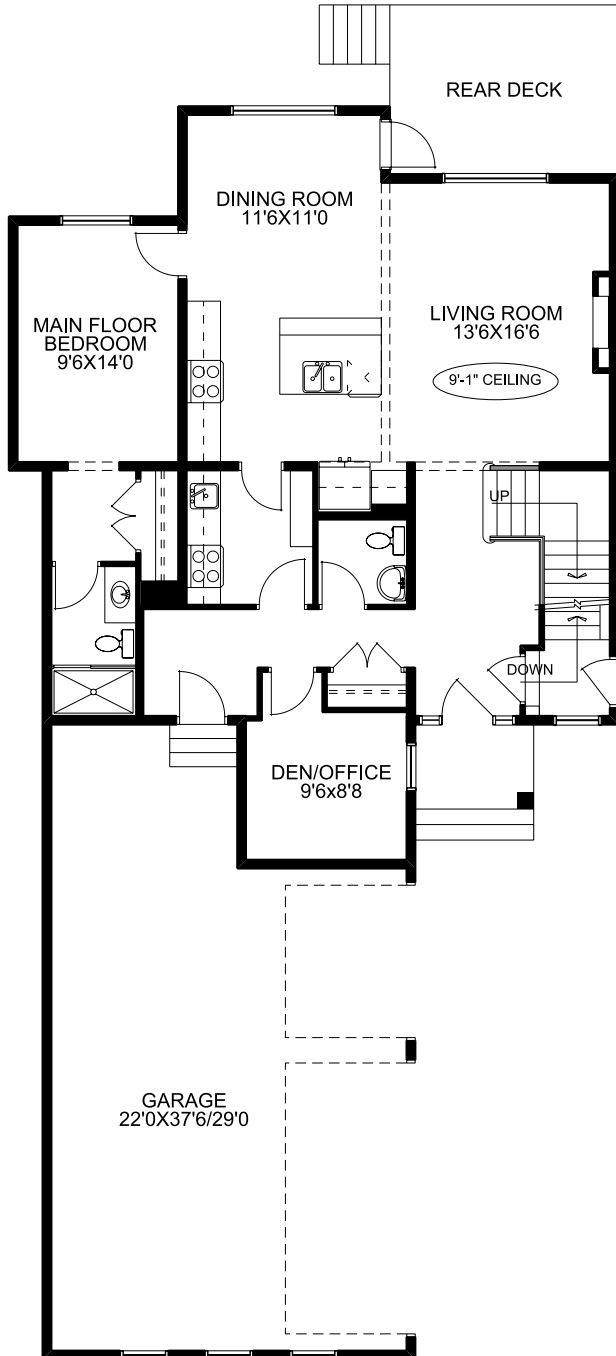
Visit Us:
2 Fieldstone Link
Rocky View County, AB



Floorplan

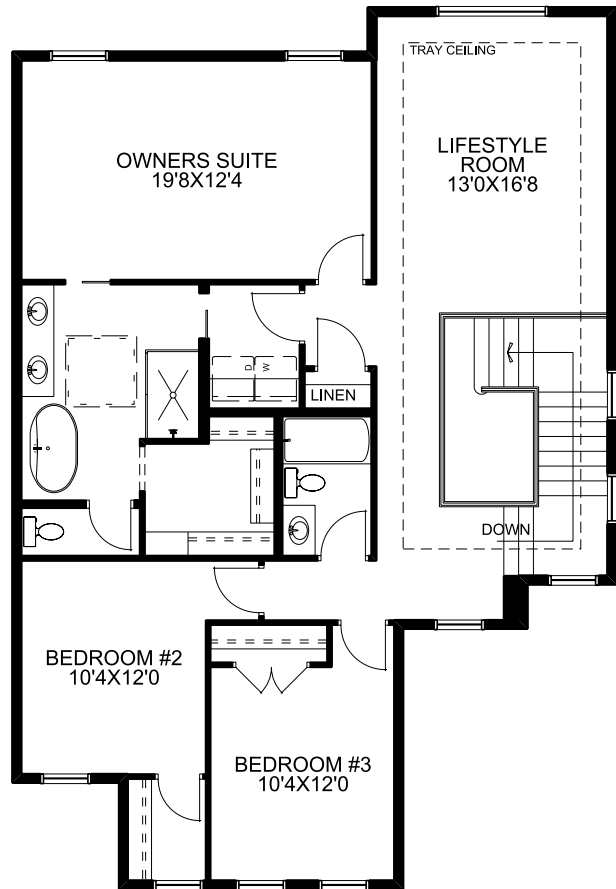
Main Floor

1259 SQFT



Upper Floor

1376 SQFT



Your Dream Home, Built Your Way.



*Prices, specs, features, and images are subject to change and may not be indicative of included items.

403-948-6595
mckeehomes.com

