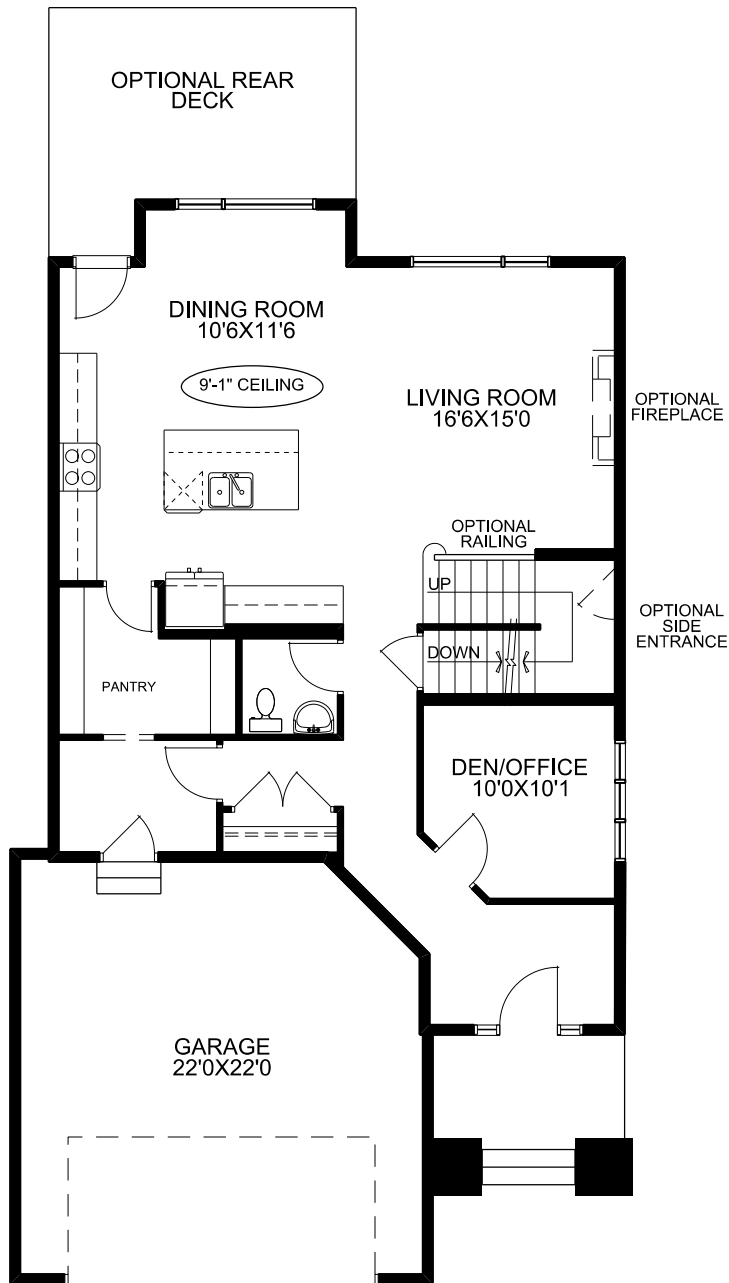




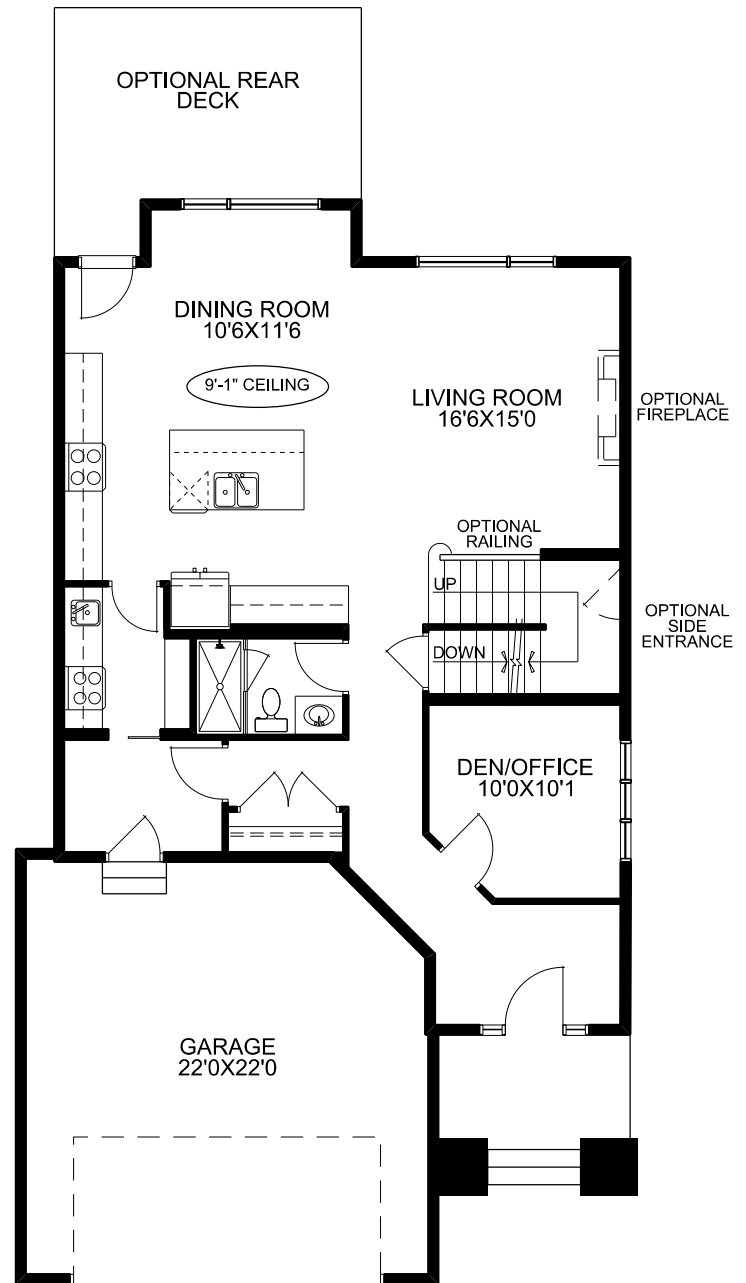
PRAIRIE

THE LOUGHNEAGH GOLDWYN





MAIN FLOOR PLAN #1
DEN - HALF BATH - PANTRY



MAIN FLOOR PLAN #2
DEN - FULL BATH - PREP KITCHEN

THE LOUGHNEAGH GOLDWYN

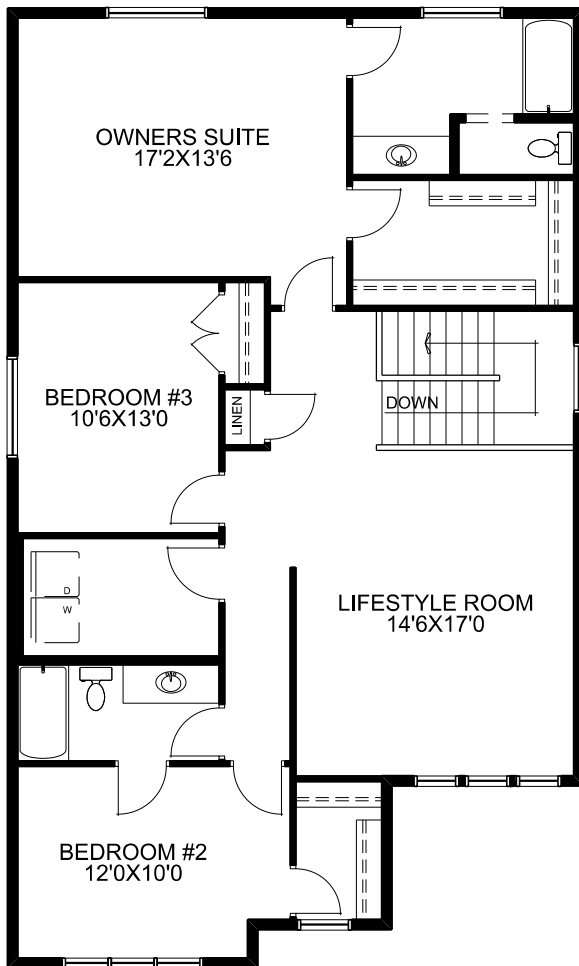
SQUARE FOOTAGES

MAIN FLOOR -	1088 SQ.FT.
UPPER FLOOR -	1391 SQ.FT.
TOTAL -	2479 SQ. FT
GARAGE -	467 SQ.FT.

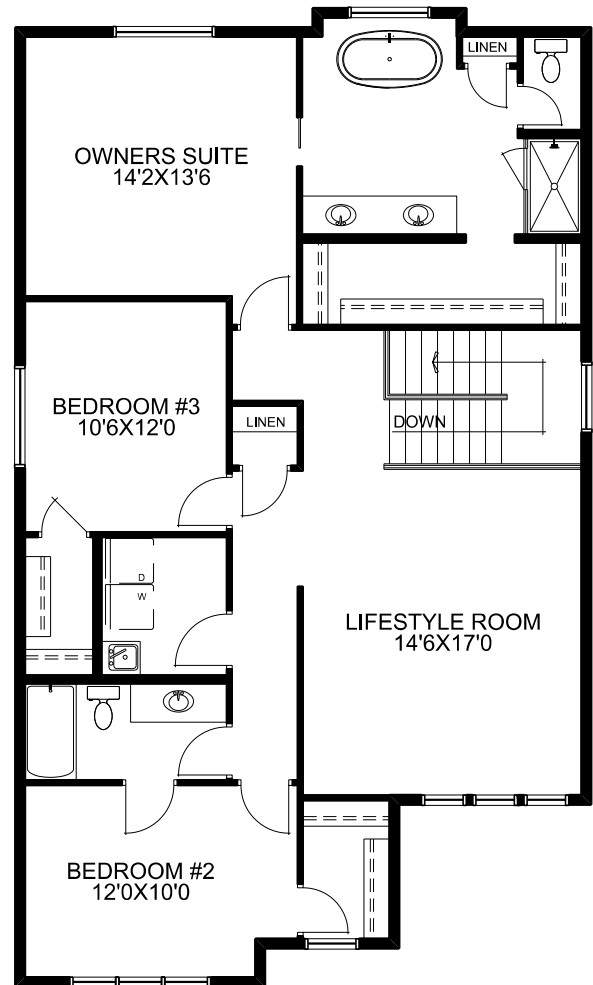
TECHNICAL SIZE = 2406 SQ.FT.
OVERALL WIDTH = 32'
OVERALL DEPTH
(EXCLUDING REAR DECK) = 56'-6"



McKEE HOMES



UPPER FLOOR PLAN #1
3 BEDROOM - PROPEL ENSUITE

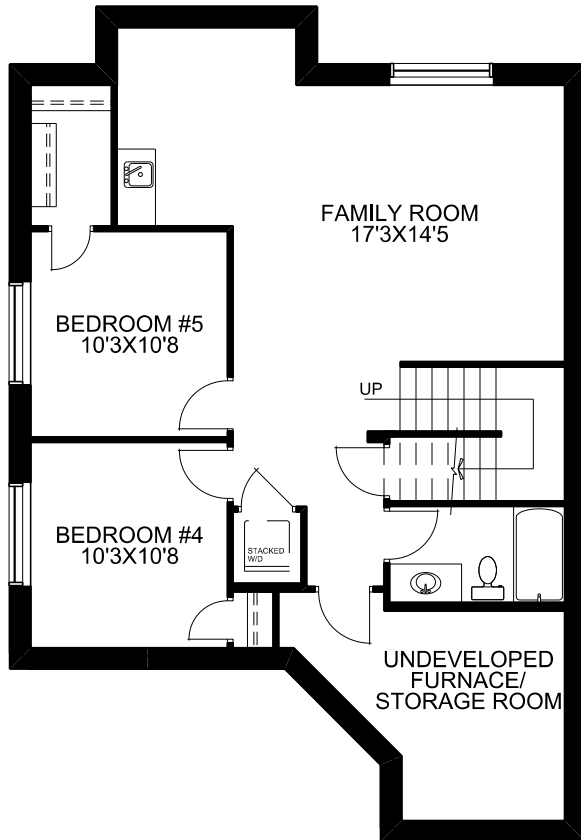


UPPER FLOOR PLAN #2
3 BEDROOM - SIGNATURE ENSUITE

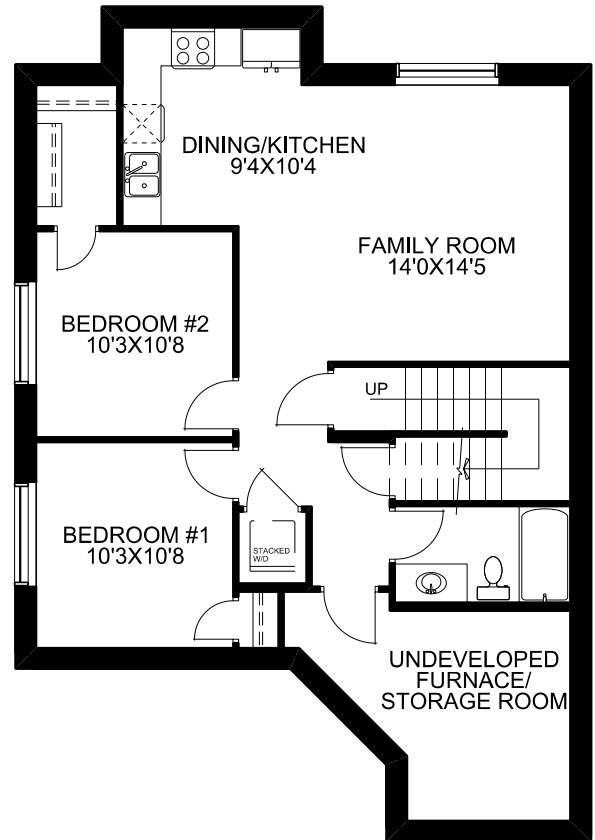
ADD 8 SQ.FT. FOR THIS PLAN - 1399 SQ.FT.



McKEE HOMES



BASEMENT DEVELOPMENT PLAN
776 SQ.FT. DEVELOPED



SECONDARY SUITE PLAN
776 SQ.FT. DEVELOPED



McKEE HOMES