



CRAFTSMAN
ELEVATION



PRAIRIE
ELEVATION

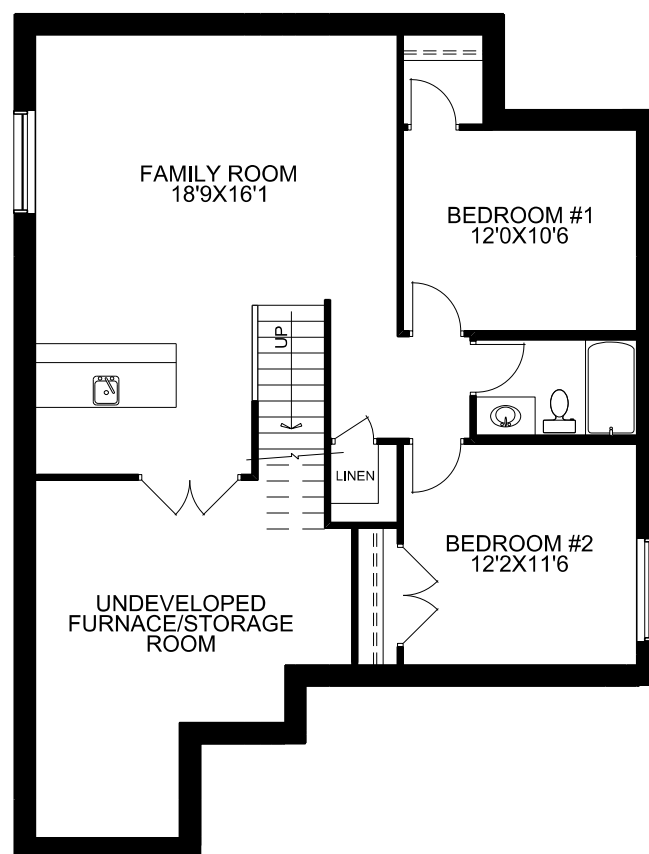
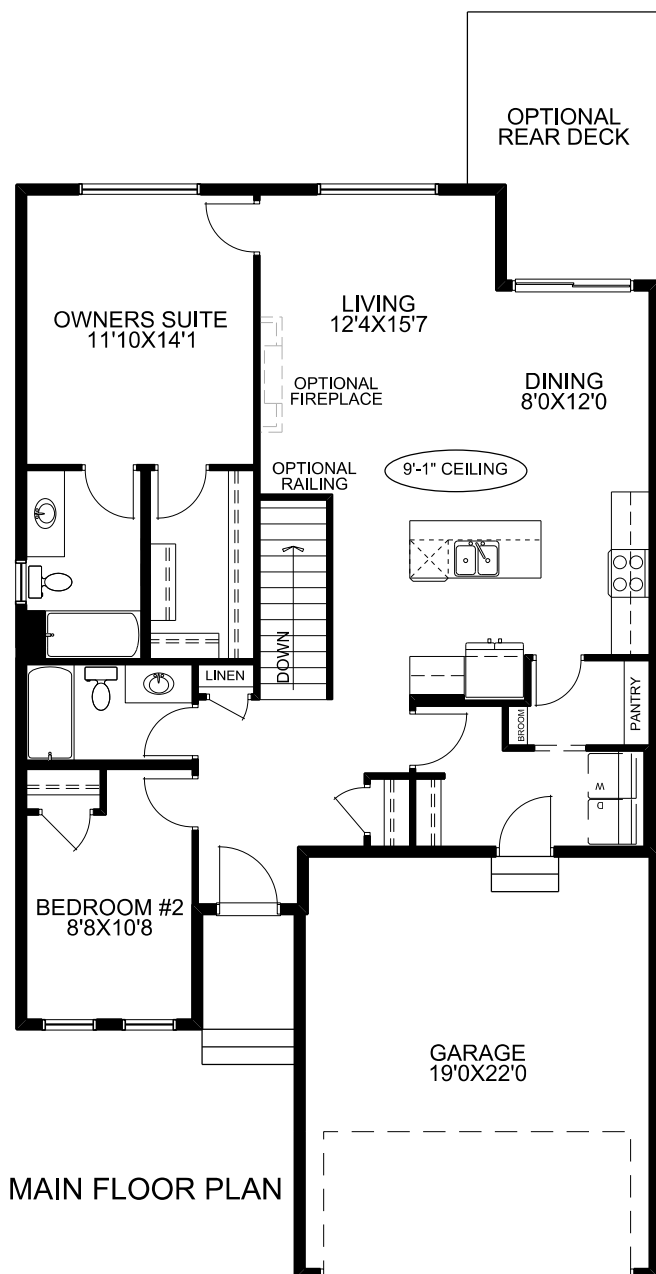


FARMHOUSE
ELEVATION



McKEE HOMES

THE PORTAFERRY



THE PORTAFERRY

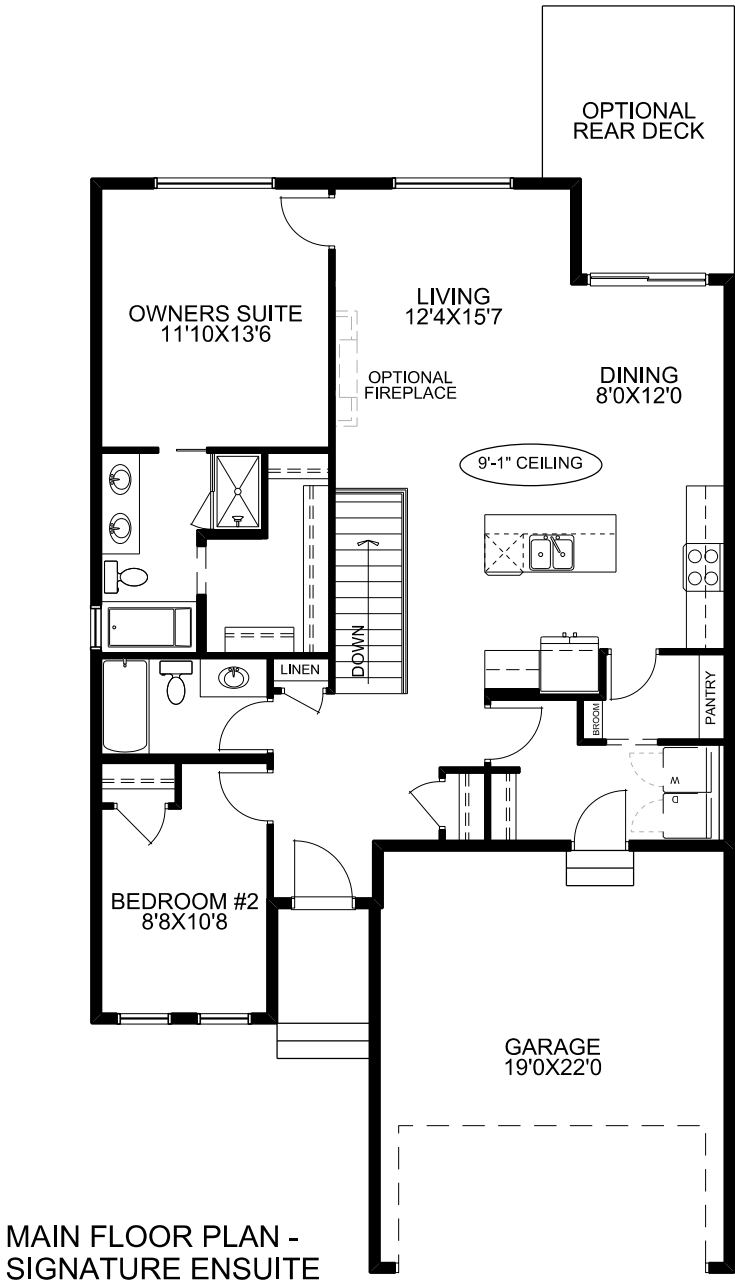


McKEE HOMES

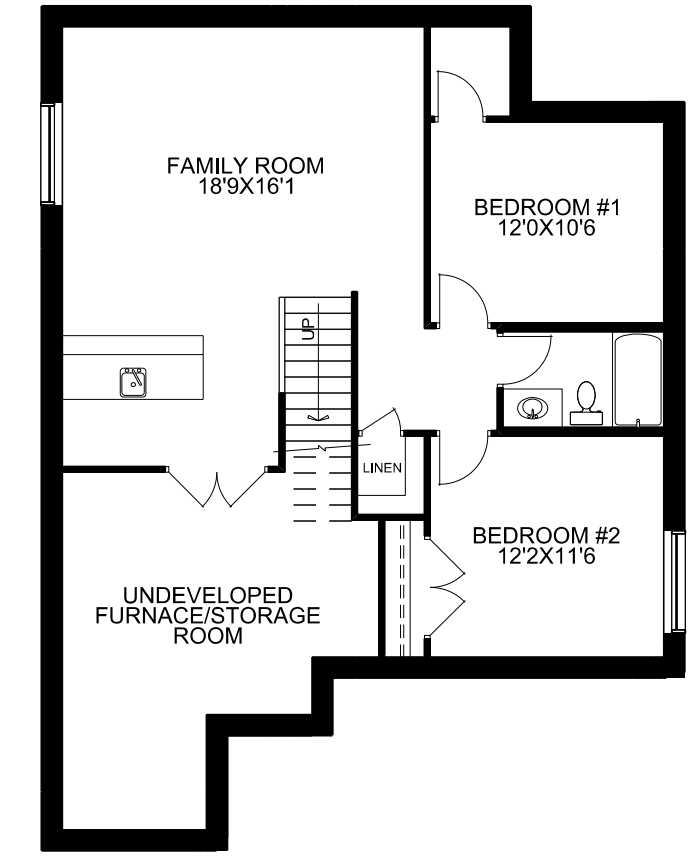
SQUARE FOOTAGES

MAIN FLOOR -	1236 SQ.FT.
GARAGE -	416 SQ.FT.

TECHNICAL SIZE = 1236 SQ.FT.
 OVERALL WIDTH = 33'-6"
 OVERALL DEPTH
 (EXCLUDING REAR DECK) = 57'



MAIN FLOOR PLAN -
SIGNATURE ENSUITE



OPT'L BASEMENT DEVELOPMENT
834 SQ.FT. DEVELOPED

THE PORTAFERRY



McKEE HOMES

SQUARE FOOTAGES	
MAIN FLOOR -	1236 SQ.FT.
GARAGE -	416 SQ.FT.

TECHNICAL SIZE = 1236 SQ.FT.
OVERALL WIDTH = 33'-6"
OVERALL DEPTH
(EXCLUDING REAR DECK) = 57'