

The Seven Summits Collection

Where Design Meets Altitude



McKEE HOMES



McKEE HOMES

Honesty in Every Detail, **Quality** in Every Corner,
Integrity in Every Home.





Interview With Grace McKee	4
Inspiration Behind the Summits Collection	
Vinson Massif	8
i. 605 Lambeau Link	
Puncak Jaya	14
ii. 1018 Bayview Crescent	
Aconcagua	20
iii. 1022 Bayview Crescent	
Elbrus	26
iv. 909 Chinook Winds Meadows	
Denali	32
v. 2 Fieldstone Link	
Kilimanjaro	38
vi. 232 Lewiston Drive	
Everest	44
vii. 240 Lewiston Drive	

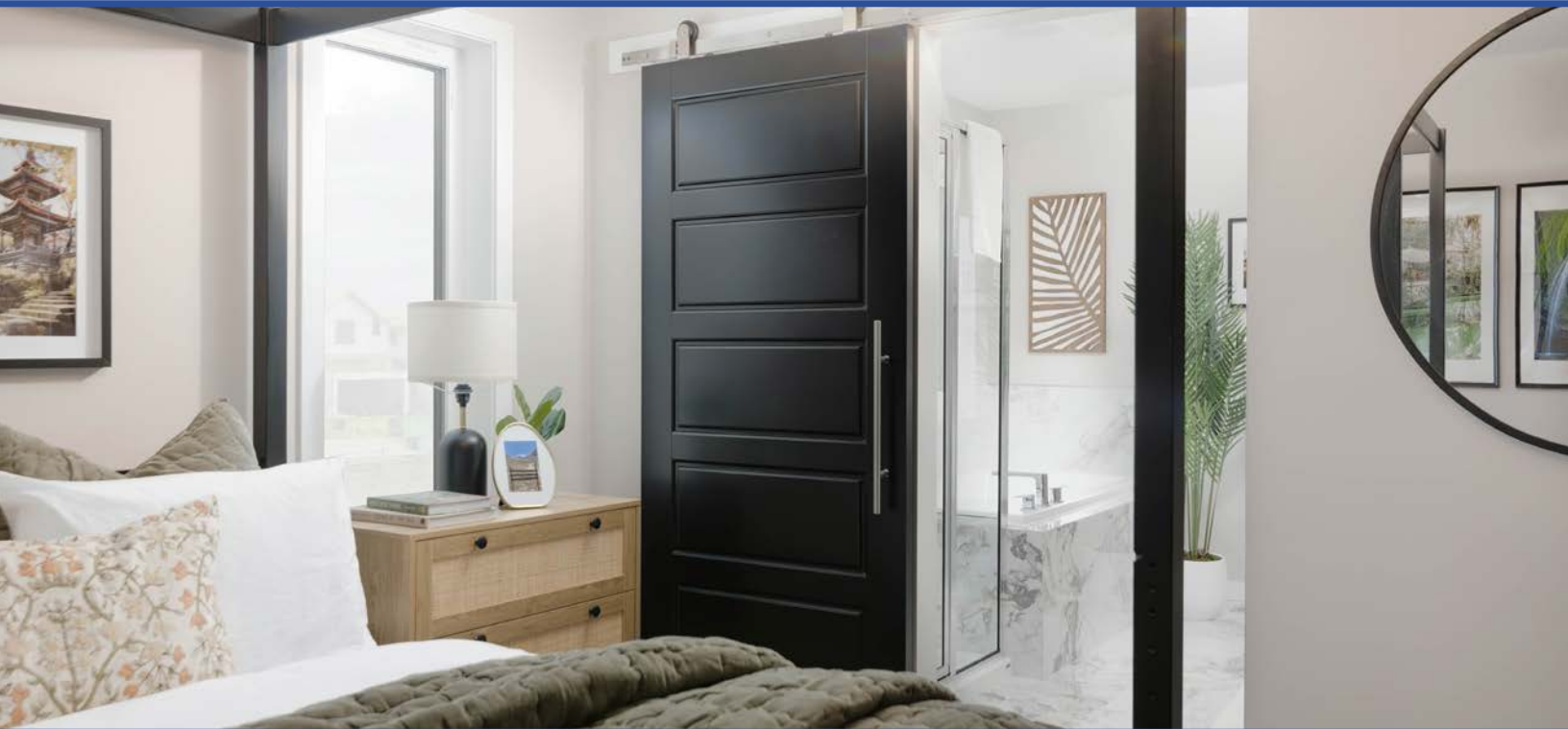
Table of Contents

Inspiration behind the Seven Summits Collection

Grace McKee
Executive Vice President



In 2024, McKee Homes faced the ambitious task of designing and furnishing seven new show homes, a challenge they embraced with an innovative concept: *The Seven Summits*. Fascinated by the difficulty and inspiration behind climbing these peaks, Grace McKee decided to incorporate their essence into new show homes, transforming each of the children's bedrooms into a tribute to the mountains and their surrounding cultures.



Each room drew inspiration from the mountain's environment and cultural elements. The designs aimed to capture the authenticity of its respective summit, making the rooms more than just visually appealing—they became storytelling spaces.

For McKee Homes, the Seven Summits project symbolizes more than creative interior design. It embodies *ambition and perseverance*. As Grace McKee described, the project mirrored the challenges faced by mountaineers—*dedication, effort, and vision*—all attributes that resonate with the company's mission to *create exceptional homes*.



Throughout the project McKee Homes prioritized *authenticity* by sourcing culturally significant items, along with stories and photographs from intrepid mountaineers.



"It wasn't just a staged house to us; it was about *representing the continents, the mountains, and the culture.*"



The Katesbridge Lifestyle (LS)



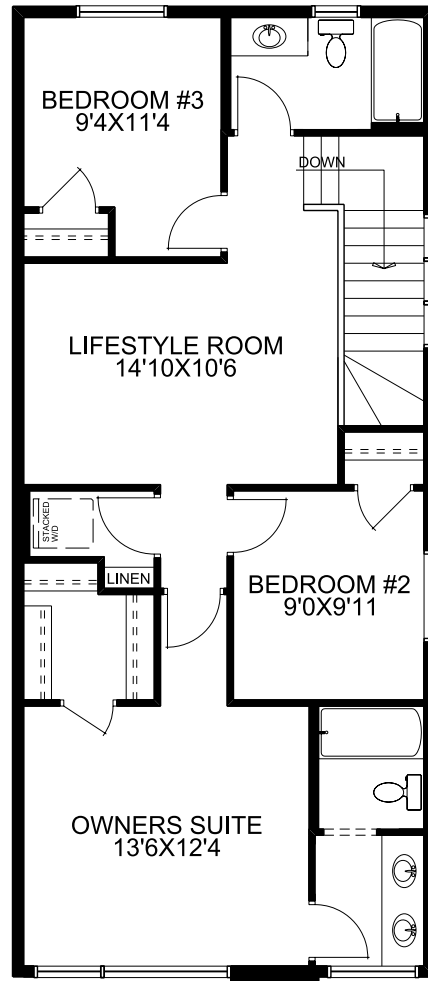
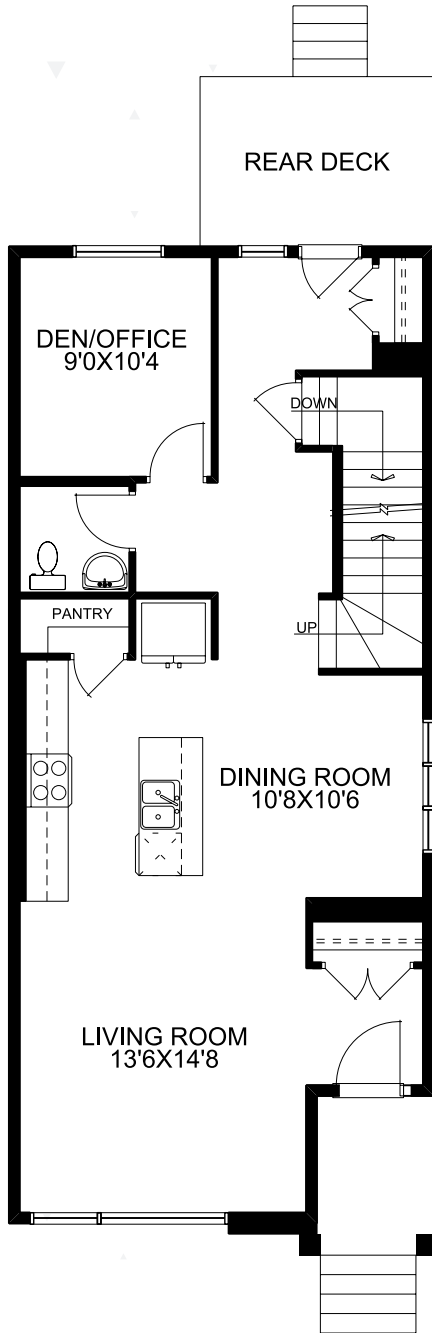
Vinson Massif is the highest peak in Antarctica, surrounded by icy plains and severe cold. Known for its pristine, snow-covered environment, it offers a glimpse into the isolation and stark beauty of the frozen continent.



McKee Homes began with Vinson Massif, inspired by the unique challenges of climbing in Antarctica. The tent bed with its tarp mimicked the structures used in polar research stations. Grace drew from documentaries and National Geographic features, bringing elements like penguins and sleds into the room to reflect the icy wilderness. Penguins, depicted jumping off cliffs into the ocean, symbolize Antarctica's playful yet harsh nature.



The Katesbridge LS



3 Bedroom
2.5 Bathroom

1807 sq. ft.
Virtual Tour
Available



10. Vinson Massif | 605 Lambeau Link

Vinson Massif

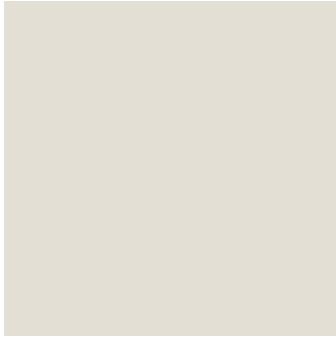
The open-concept main floor seamlessly connects the kitchen, dining, and living areas, promoting family interaction and effortless entertaining.

Soft-close cabinetry, quartz countertops, and a full-depth fridge cupboard for extra storage and a sleek look are included in the kitchen.

Adding depth, warmth, and character, the brick feature wall serves as a striking architectural focal point throughout the home.



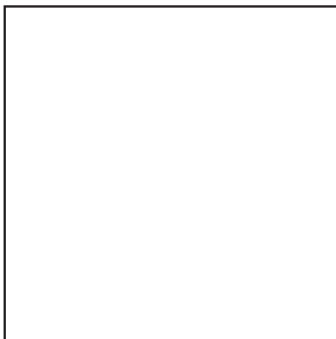
Selections



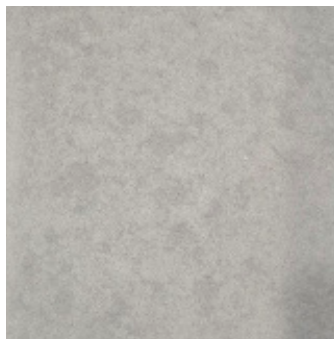
Classic Grey
Main Floor Wall Paint



Sheer Beauty
Lower Cabinets



Cotton Mist
Upper Cabinets



Thunder Grey
Countertops



Cocoon
Luxury Vinyl Plank



Bricklane White
Feature Walls



At McKee Homes, our tailored design process ensures
your home reflects your *unique vision*.

The Katesbridge LS is a thoughtfully designed home,
crafted to meet the needs of families with

style and functionality.





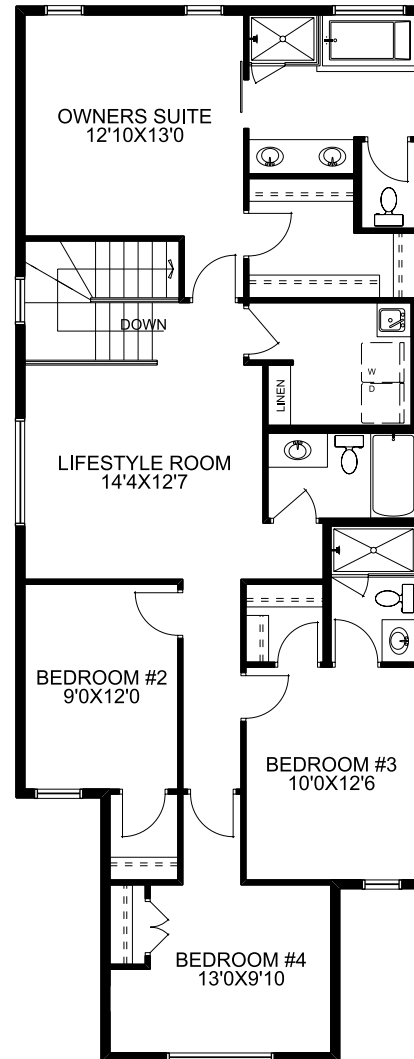
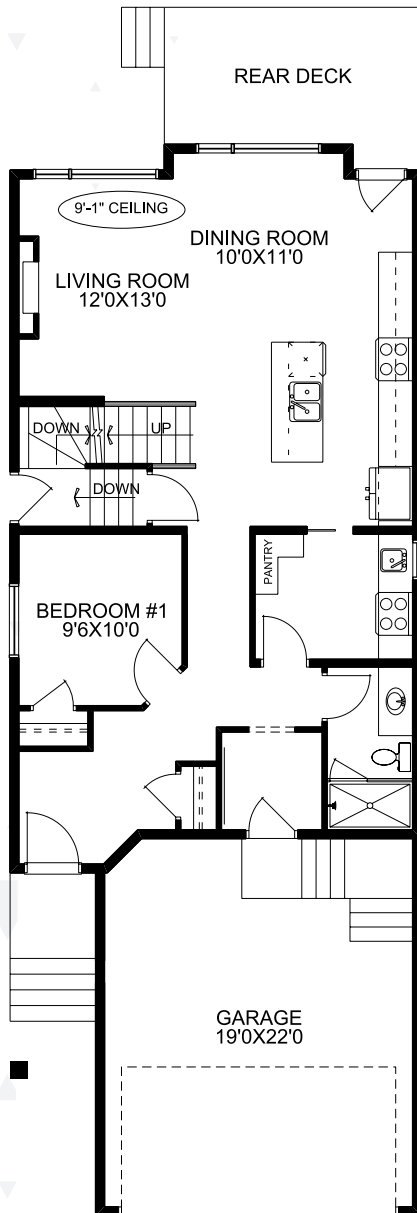
Puncak Jaya, the highest peak in Oceania, is surrounded by dense tropical rainforests and features a *unique gold mine* near its base. Its rugged terrain and remote location make it one of the most challenging climbs in Oceania. The mountain also holds cultural significance, as it is situated within the rich tribal lands of Papua, adding layers of heritage and history to its allure.



This room incorporated the tribal and adventurous spirit of Papua's highest peak. The gold mining chest and tribal masks represented the *culture and history* surrounding the mountain. Tiki torches at the room's entrance added an adventurous flair, and the tent bed reflected the base camp setups unique to the region.



The Ferns N



5 Bedroom
4 Bathroom

2326 sq. ft.
Virtual Tour
Available



Puncak
Jaya

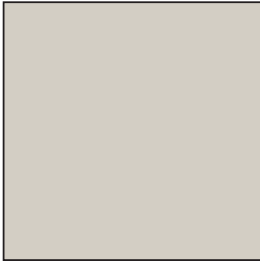
Offering privacy and convenience, a *versatile bedroom* on the main floor is perfect for family, guests or a home office. Adjacent to the main kitchen, the prep kitchen adds extra functionality while maintaining a tidy cooking space.

The modern kitchen stands out with its warm wood cabinetry, striking *marble styled* porcelain backsplash. A large island with bar seating and a stylish light fixture makes it ideal for both everyday use and entertaining.

Featuring *elegant marble* finishes, a double vanity, and stylish decor, the luxurious owner's ensuite offers a perfect blend of functionality and refined comfort.



Selections



Collingwood
Ensuite Wall Paint



Thunder Grey
Countertops



Symphonia
Ensuite Flooring
& Backsplash



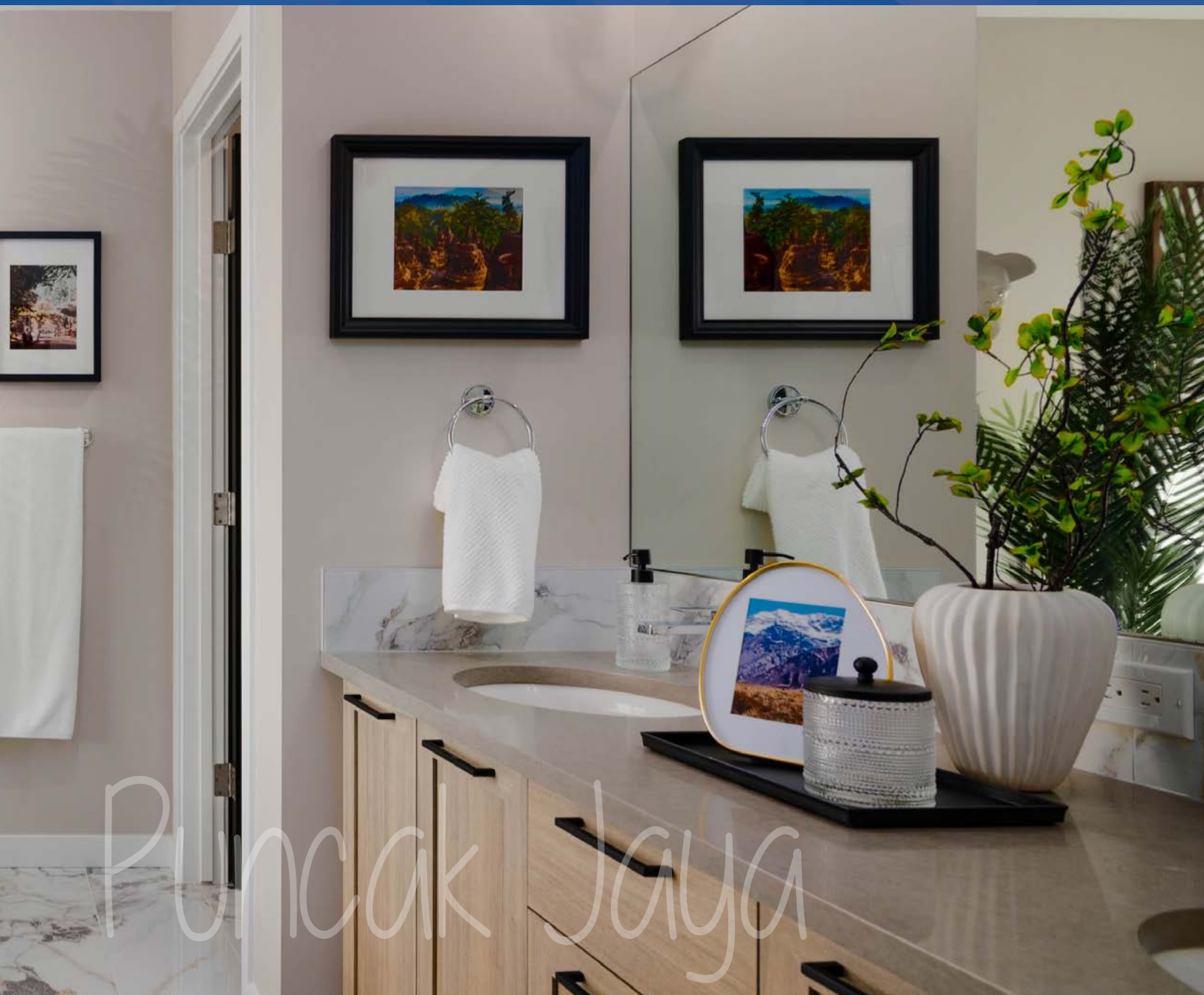
Rhapsody
Cabinets



The Ferns N offers versatile spaces, comfortable living,
and thoughtful details, all brought together with a touch
of natural greenery to feel

effortlessly elegant.

Your vision, our expertise - building homes with honesty, quality,
and integrity.



The Ballina N II



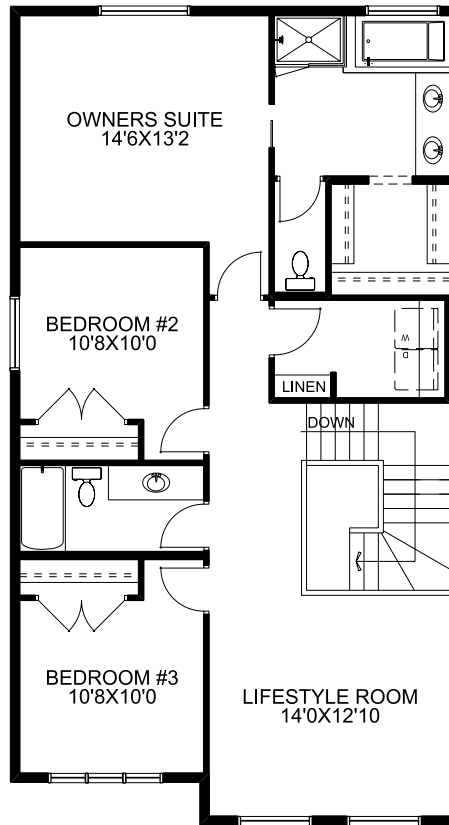
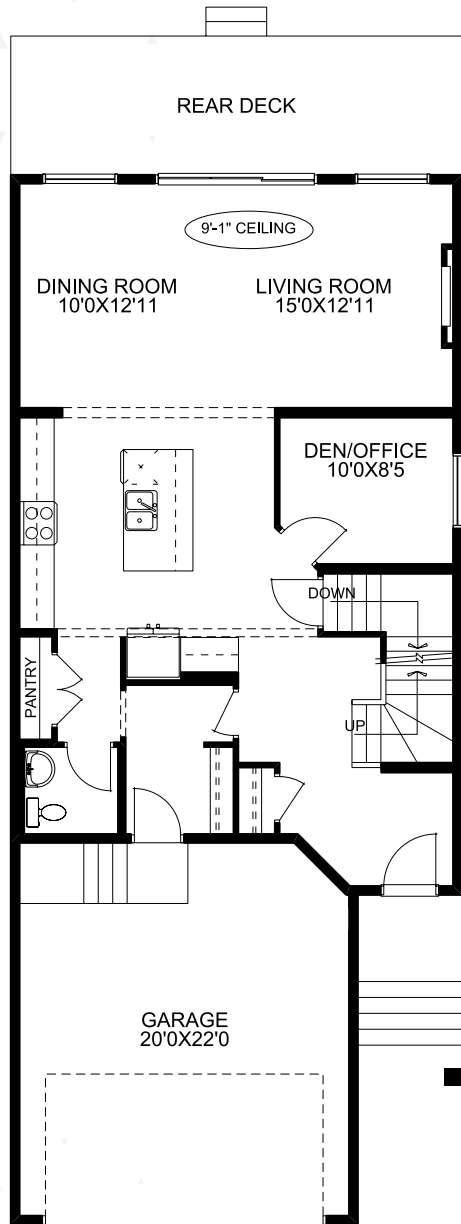


Located in Argentina, *Aconcagua* is South America's tallest mountain. It transitions from lush rainforests to barren, high-altitude peaks. Aconcagua stands as a testament to the beauty and biodiversity of the Andes. Its towering presence and extreme conditions have earned it the nickname "The Stone Sentinel."

Our Aconcagua room celebrated the contrast between the lush Amazon rainforest and the stark mountains of Argentina. Grace designed the room to transition from jungle-like vines and hanging animals to a mountaineering aesthetic with a custom-made base camp tent. Solar panels represented the practical needs of climbers, while the bed's branding, "*McKee Aconcagua Expeditions*," added a personal touch.



The Ballina N II



3 Bedroom
2.5 Bathroom

2234 sq. ft.
Virtual Tour
Available



22. Aconcagua | 1022 Bayview Crescent

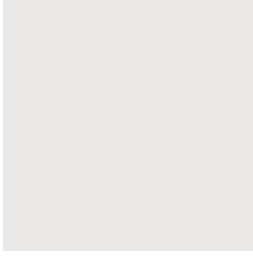
Blending artistic expression with modern design, the dining space showcases a gallery wall of vibrant, eclectic artwork that adds *personality* and charm.

Exuding *bold elegance*, the ensuite showcases deep green cabinetry, matte black fixtures, and soft lighting for a striking contrast against the dark walls. Unique terrazzo tile with multicolored flecks adds a playful touch of character.

This *vibrant* powder room is full of personality, featuring rich green walls adorned with a curated gallery of artwork.



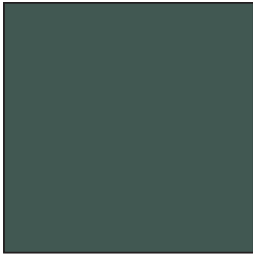
Selections



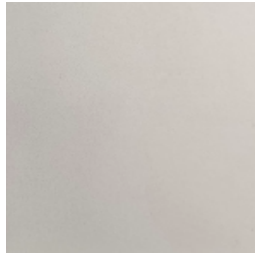
Standard White
Main Floor Wall Paint



Oxford Grey
Cabinets



Tarrytown Green
Accent Wall Paint



Bright White
Countertops



Stormy Skies
Luxury Vinyl Plank

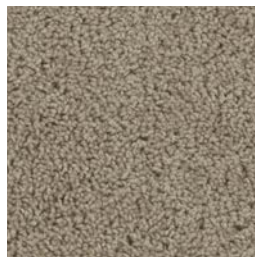


Argento Glossy
Backsplash

Owner's Suite



Black Licorice
Owner's Suite
Paint



Dreamweaver
Owner's Suite
Carpet



The Ballina N II combines elegant design with thoughtful spaces filled with warmth, style, and

creative expression.



The Carlingford N



Elbrus



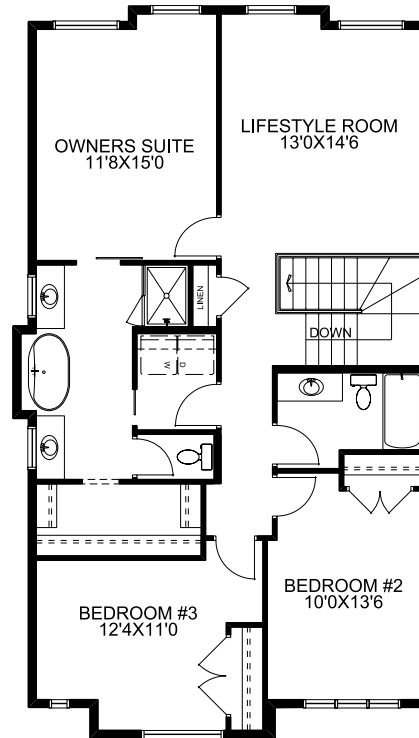
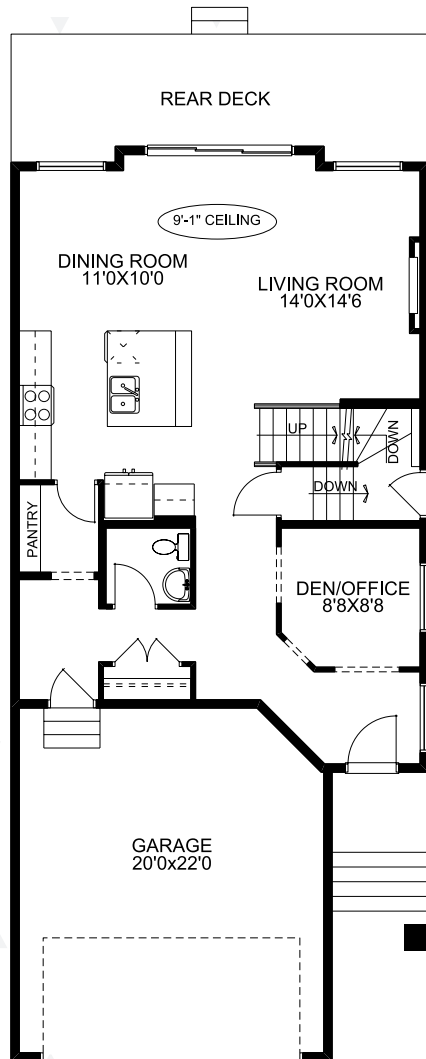
Elbrus, located in Russia, is Europe's tallest mountain. It is also a popular ski destination, offering a mix of rugged mountaineering and *alpine luxury*. Known for its accessibility, Elbrus represents a meeting of adventure and leisure. Its twin-peaked silhouette and year-round snow make it an iconic and visually stunning landmark in the Caucasus Mountains.

Grace drew inspiration from Elbrus's dual identity as a ski destination and a challenging peak. The gondola was a standout feature, symbolizing the ski lifts used on the mountain.

Vintage ski gear and snowcat imagery added an alpine charm, while the room's mural depicted the unique transportation methods on the mountain.



The Carlingford N



3 Bedroom
2.5 Bathroom

2131 sq. ft.
Virtual Tour
Available



28. Elbrus | 909 Chinook Winds Meadows



Elevated by a beautifully designed *tray ceiling* and a modern central light fixture, this owner's suite exudes elegance. Its refined ambiance perfectly complements the warm tones and minimalist decor.

Adding texture and warmth, the *stone accent wall* creates a striking contrast to the sleek cabinetry and polished countertops in the kitchen.

Soft gray tones, marble-inspired flooring, and wall accents create a spa-like atmosphere in the ensuite, while the open walk-in closet enhances convenience and flow.

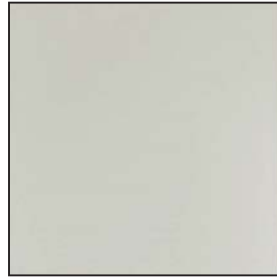
Selections



Bahama
Luxury Vinyl Plank



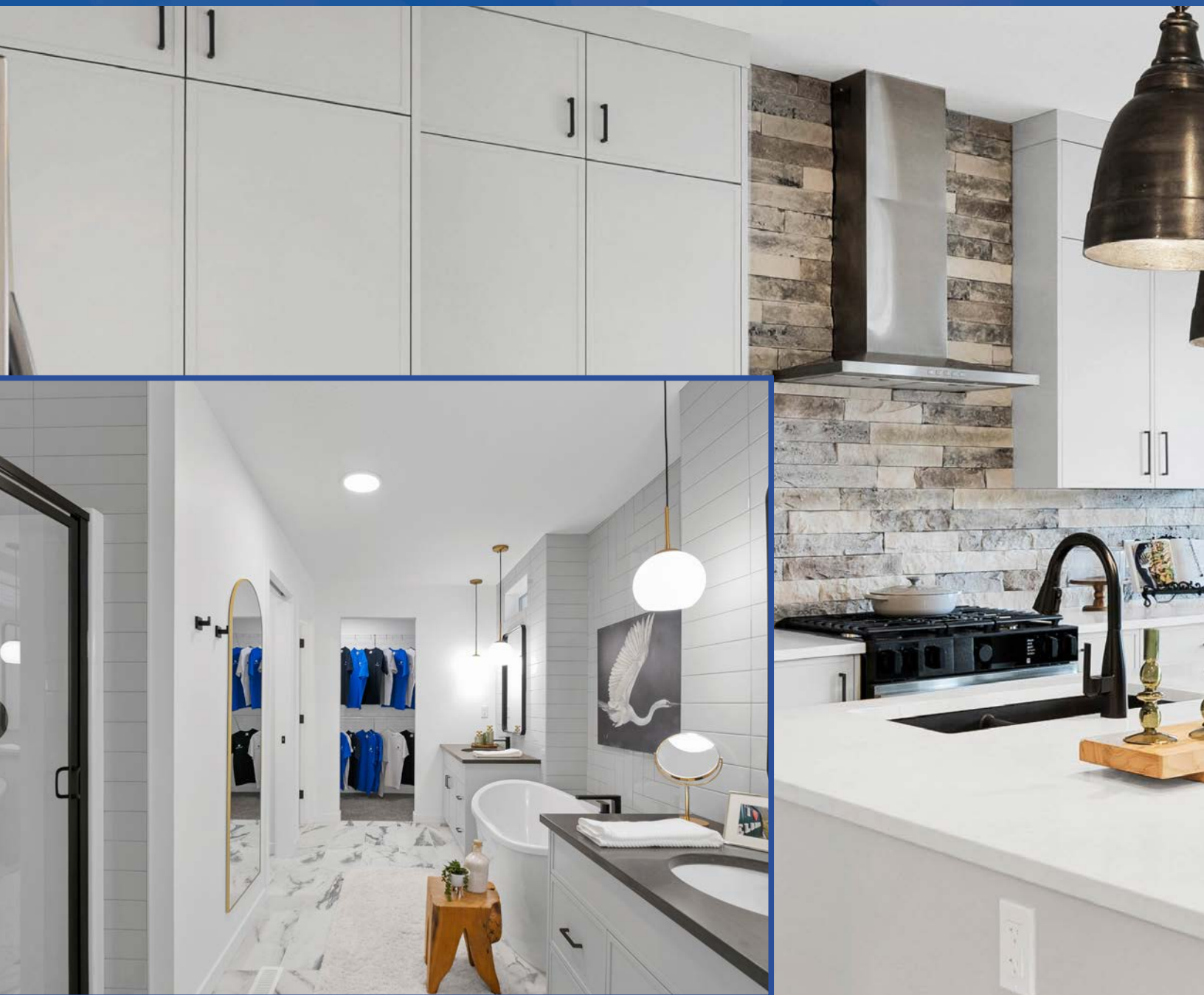
Whitecap Stone
Backsplash



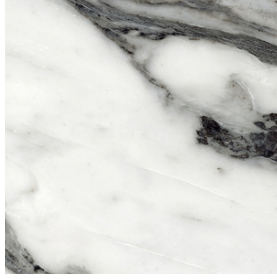
Mushroom
Cabinets



Opulent Gold
Countertops



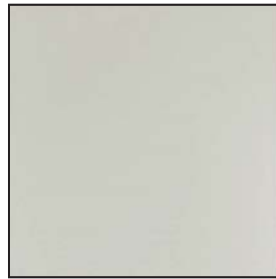
Ensuite



Natural Bianco
Ensuite Flooring



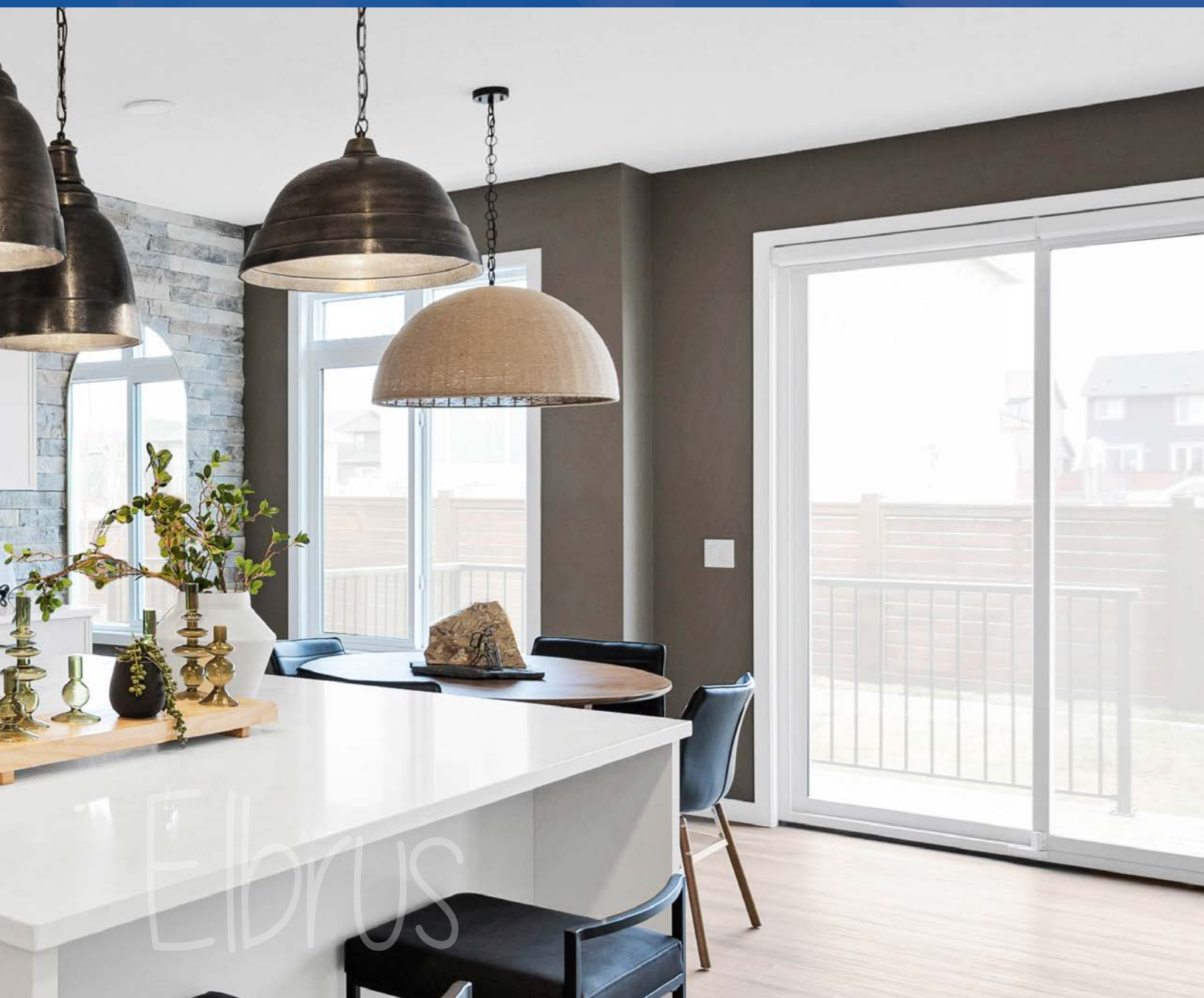
Polvere Glossy
Bathroom Tile



Mushroom
Cabinets



Carbon
Countertops



The Aldergrove



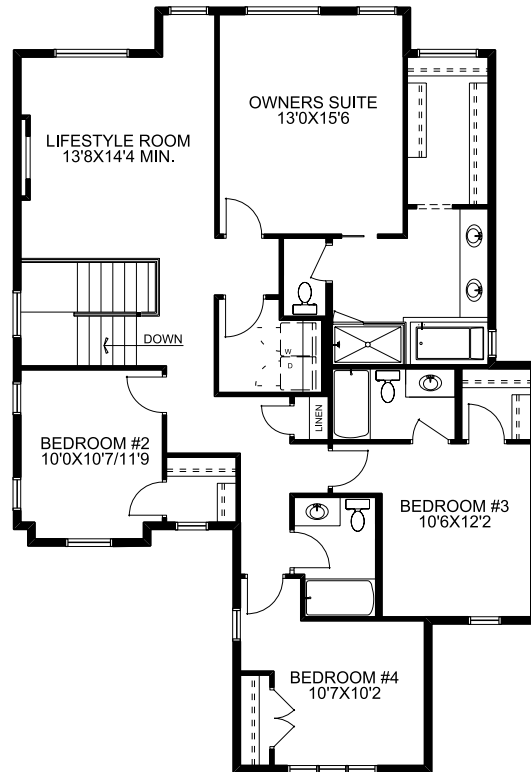
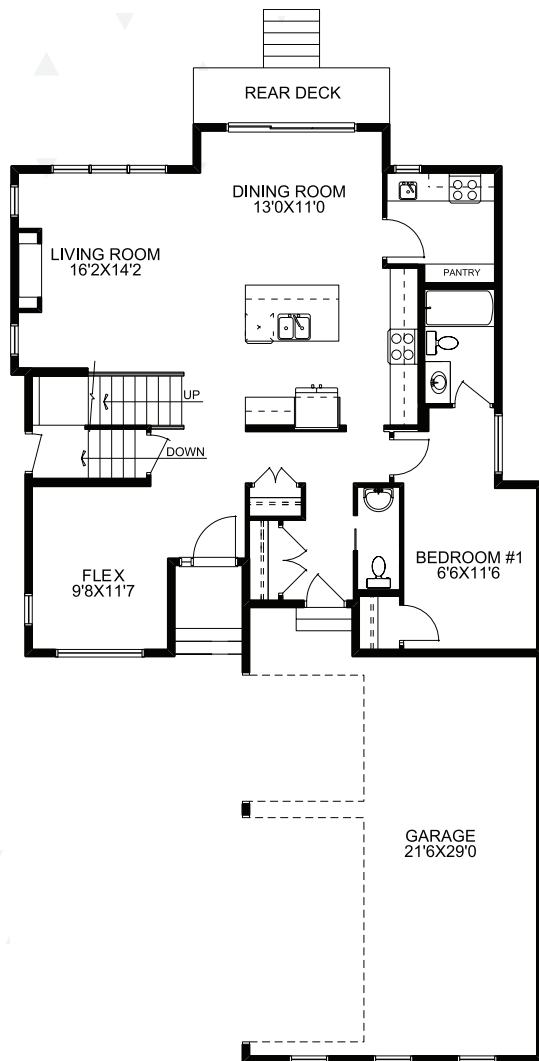
Denali, located in Alaska, is North America's tallest peak. Known for its harsh weather, it challenges climbers with its **cold temperatures** and remote location. The mountain's stunning, untouched beauty is a beacon for adventurers seeking solitude and challenge. Its name, meaning "The High One" in the Koyukon Athabaskan language, reflects its cultural significance to Alaska's Indigenous people.



Denali's room showcased the ruggedness of Alaska. The **snow wall** around the bed symbolized the protective barriers climbers build to shield against storms. The Twin Otter airplane model honored the aircraft that transports climbers to Denali's base camp. Fishing gear and North American wildlife plushies paid homage to Alaska's outdoorsy culture.



The Aldergrove



5 Bedroom
4.5 Bathroom

2766 sq. ft.
Virtual Tour
Available



Denali

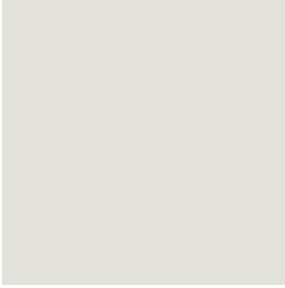
Offering *three private ensuites*, the Aldergrove delivers ultimate comfort and convenience—one on the main floor for guests and two upstairs, including a luxurious owner's ensuite and a secondary bedroom ensuite for added privacy.

The inviting living room showcases a stunning *floor-to-ceiling* stone fireplace with a custom mantle, creating a bold focal point that projects warmth and rustic charm.

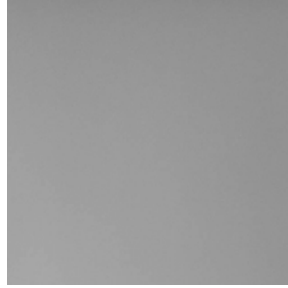
Beautifully designed with sleek grey cabinetry, a large island with a farmhouse sink, and eye-catching pendant lighting, the kitchen projects warmth and style.



Selections



Silver Satin
Main Floor Wall Paint



Dove Grey
Cabinets



White Matte
Backsplash

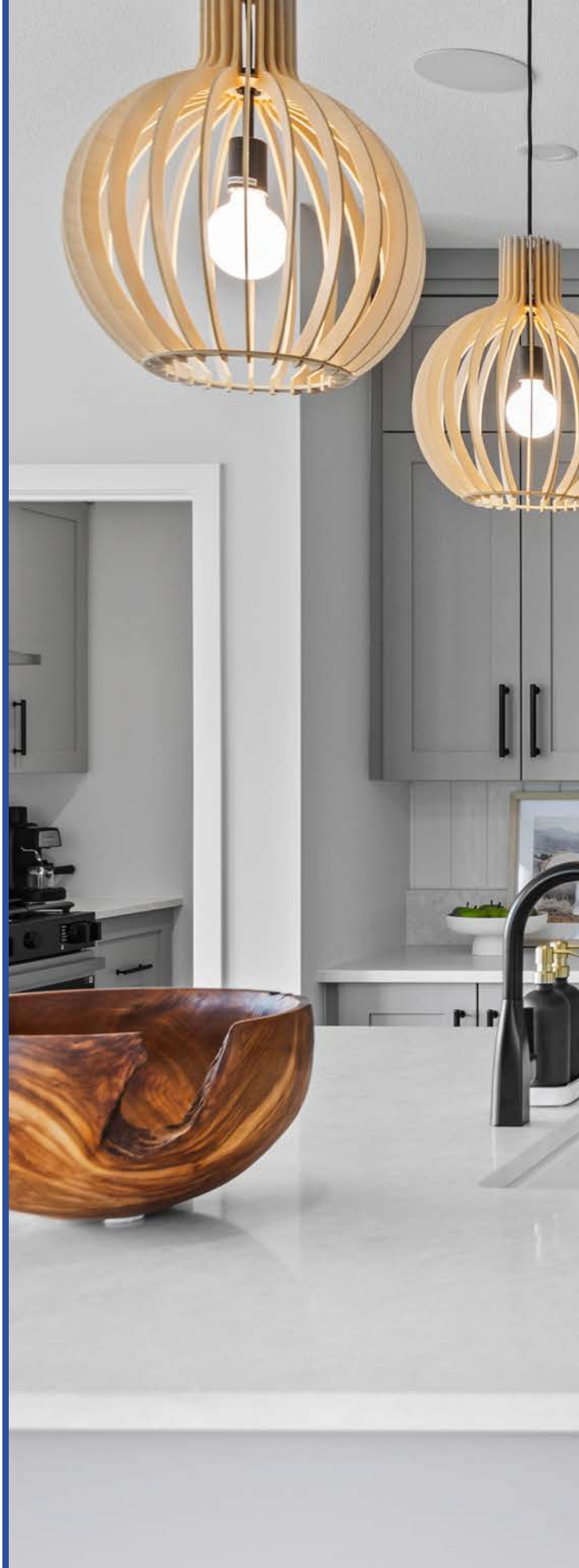


Opulent Gold
Countertops



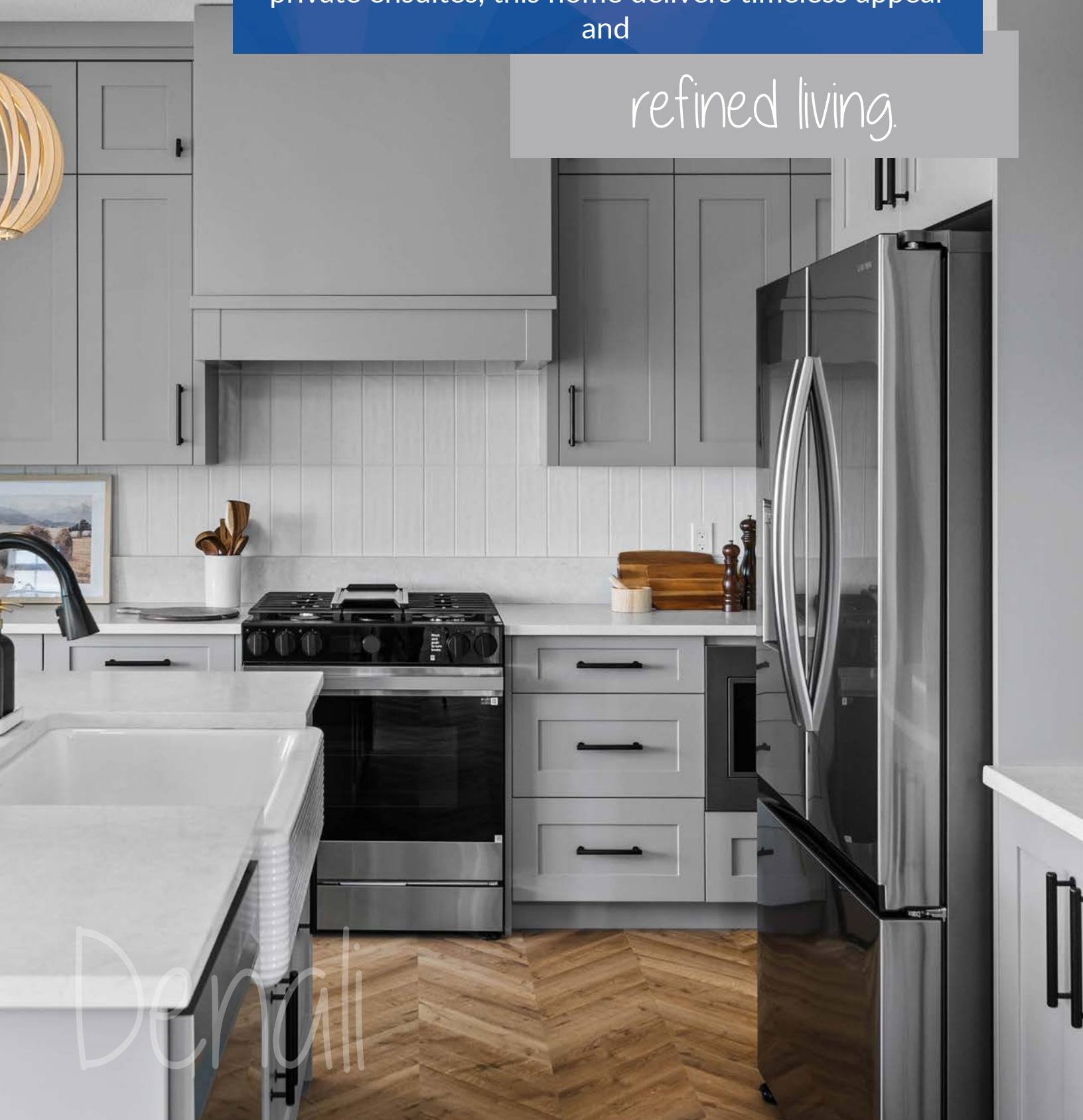
Art District Chevron
Luxury Vinyl Plank

Our process is thoughtfully designed to turn [your vision](#) into reality, with support and care every step of the way.

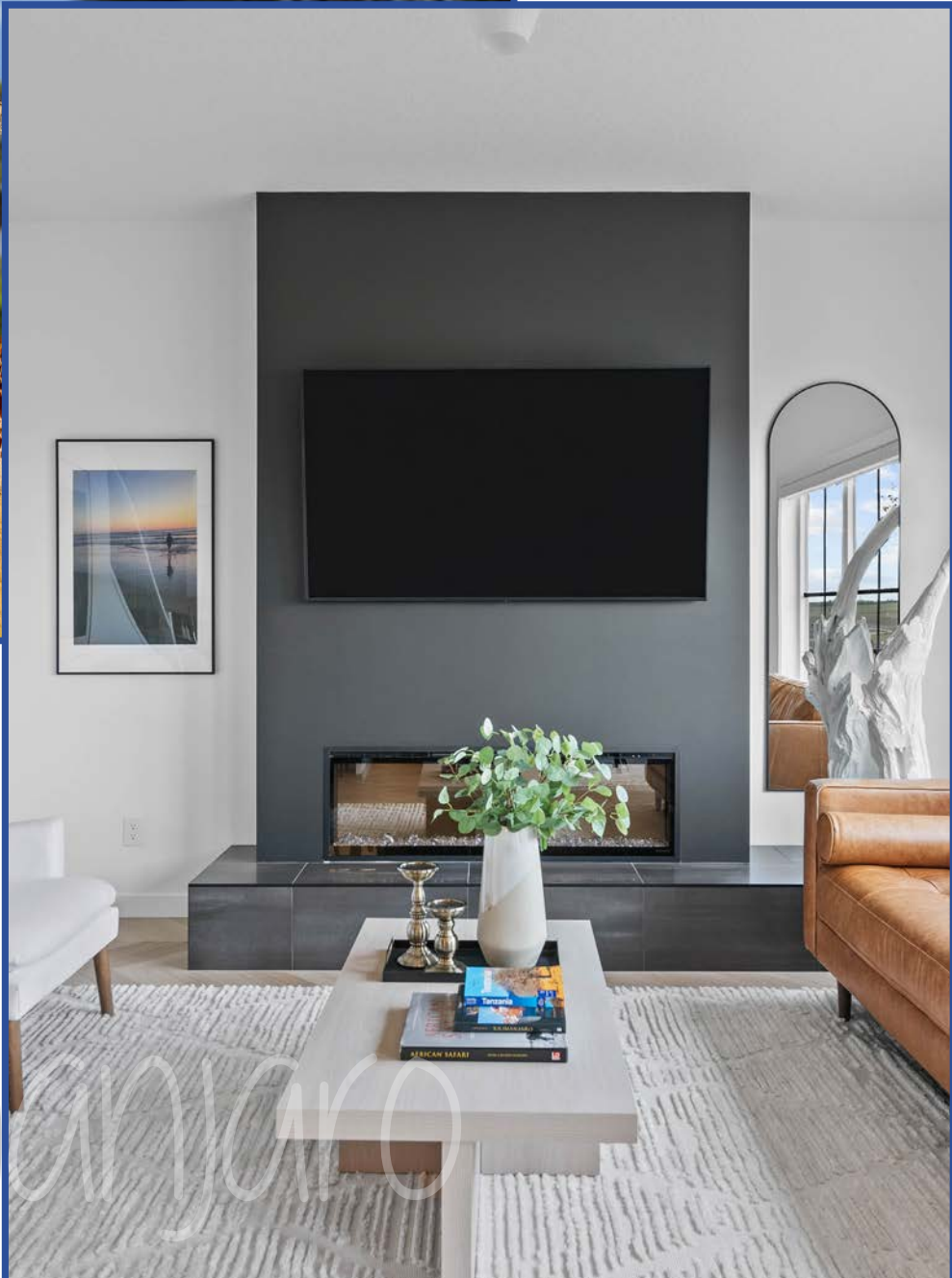
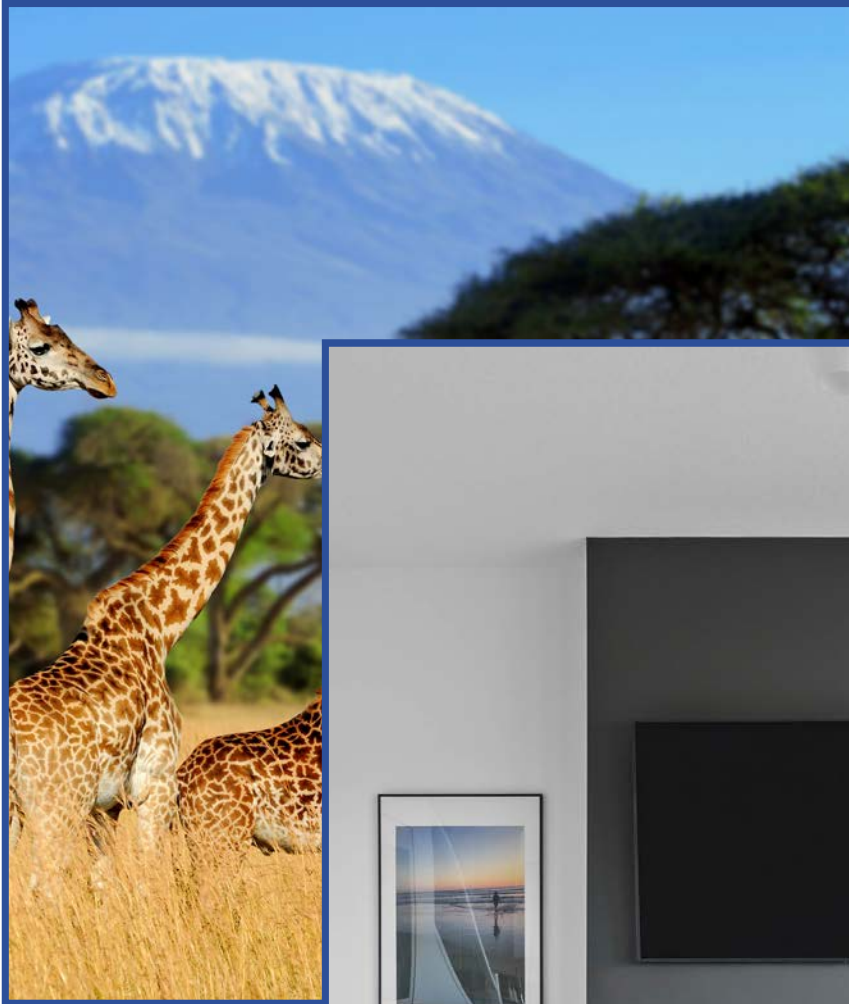


With elegant finishes, artistic touches, and multiple private ensuites, this home delivers timeless appeal and

refined living.



The Ferns Zero Lot Line (ZLL)



Kilimanjaro



Kilimanjaro, Africa's tallest mountain, rises above the Serengeti plains, offering breathtaking views of *wildlife and savannah landscapes*. Known as one of the most accessible high peaks, it attracts both seasoned climbers and adventurers seeking a unique wilderness experience. Its snow-capped summit, contrasting with the warm plains below, stands as a striking symbol of Africa's natural diversity.

Kilimanjaro's room was envisioned as a *safari adventure*, with decor reflecting the Serengeti's rich biodiversity. The platform bed, surrounded by ropes, was inspired by safari lodges, where beds are often draped in mosquito netting. Animals like elephants and giraffes added a playful, child-friendly touch, while the custom-built safari Jeep captured the spirit of exploration.



The Ferns ZLL



3 Bedroom
2.5 Bathroom

2089 sq. ft.
Virtual Tour
Available

40. Kilimanjaro | 232 Lewiston Drive



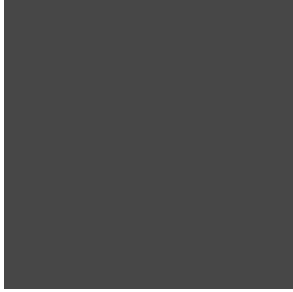


Designed with a young family in mind, soft pink tones, a bold rainbow accent wall, and cozy furnishings create a fun, inviting atmosphere. Opposite the bed, a [wall-to-wall ballet mirror](#) adds elegance and functionality, perfect for both play and practice.

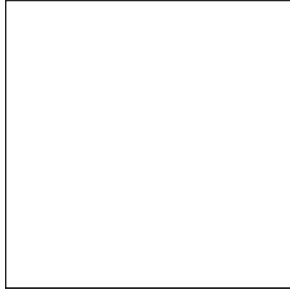
Crisp white cabinetry and a polished [quartz island](#) create a bright, clean aesthetic in the kitchen. An [illuminated glass](#) display cabinet adds a refined touch, beautifully contrasting the bold dark accent wall.

A striking feature wall with a [sleek built-in fireplace](#) anchors the living room, creating a cozy yet modern focal point.

Selections



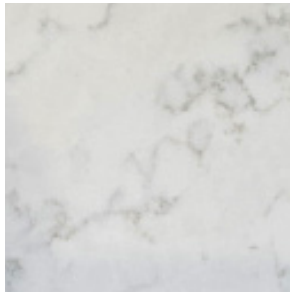
Black Licorice
Feature Wall Paint



Cotton Mist
Cabinets



Polished Grey
Backsplash



Opulent Silver
Countertops



Chevron - Grounded
Luxury Vinyl Plank

At McKee Homes, our clients are our top priority; we meticulously plan every step of the building process to ensure *your experience* is seamless and enjoyable.



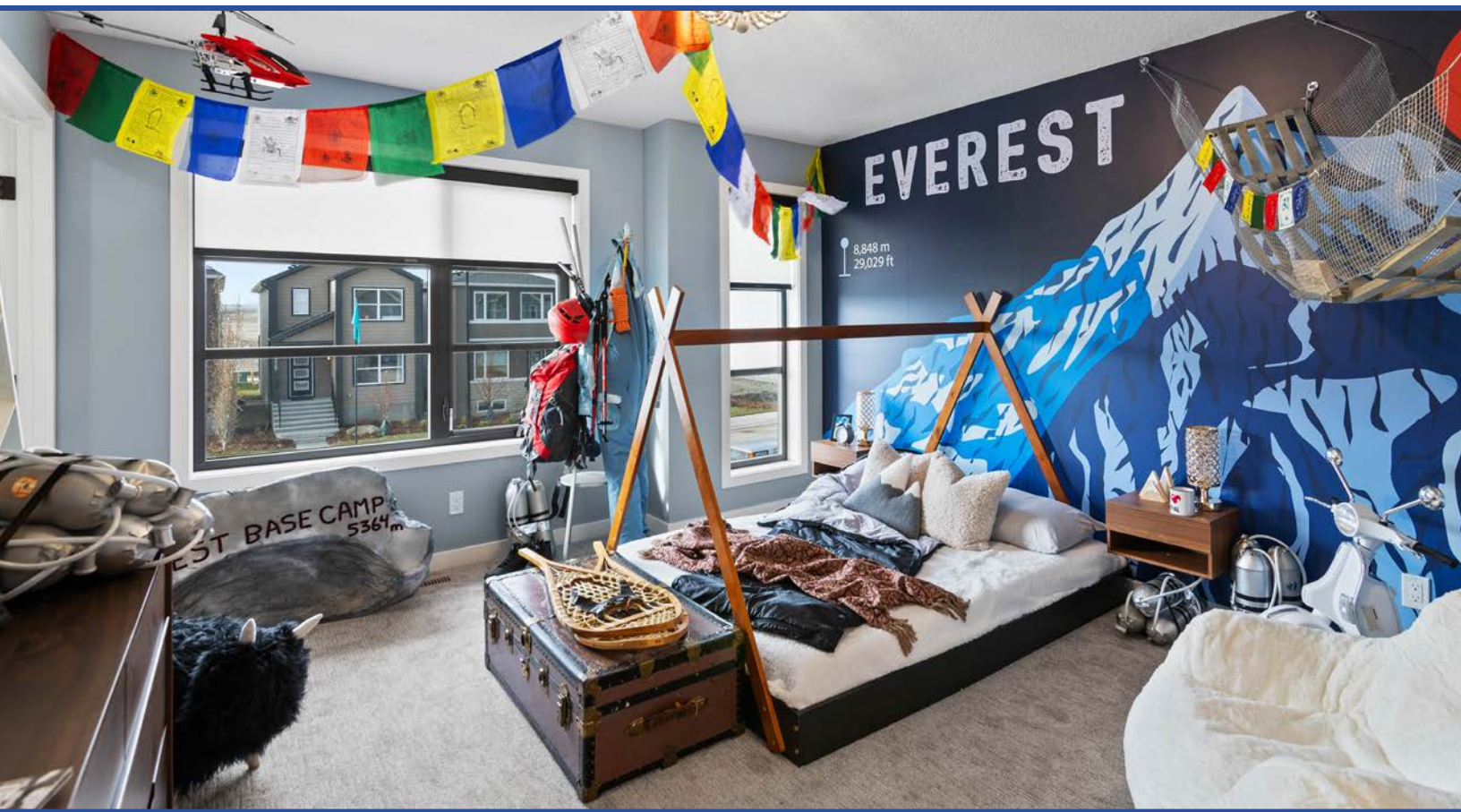


The Cavehill Zero Lot Line (ZLL)



Everest

Everest, the world's tallest mountain, is located on the border of Nepal and Tibet. Its iconic base camp and cultural significance make it a dream destination for climbers and adventurers. Everest symbolizes human perseverance and the triumph of spirit over adversity. The mountain's harsh conditions and breathtaking landscapes have inspired countless stories of courage and exploration.



Designed with iconic trekking landmarks in mind, the Everest-themed room features the Everest Base Camp rock and the Hillary Bridge as staples of the journey to the summit. The addition of [prayer wheels](#) and flags brings a cultural depth to the space, while the Vespa scooter reflects the vibrant, bustling streets of Nepal.



The Cavehill ZLL



5 Bedroom
4 Bathroom

2529 sq. ft.
Virtual Tour
Available



46. Everest | 240 Lewiston Drive

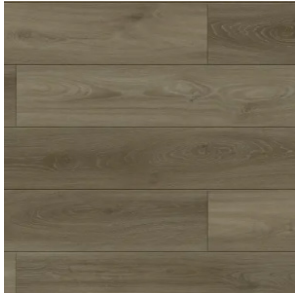


Exposed wood beams add warmth and rustic charm, perfectly complementing the sleek island and elegant waterfall countertop in this modern kitchen.

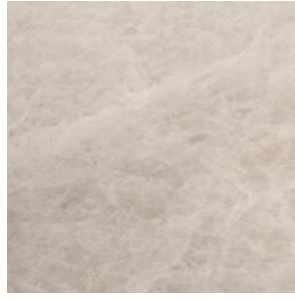
Featuring a main floor bedroom with a full bath, the layout is perfect for hosting guests or accommodating extended family. Upstairs, two owner's suites with private ensuites offer enhanced comfort and privacy.

The basement suite offers a private living space complete with two bedrooms, a full bathroom, and a spacious living room. With its own dining area and kitchen, it's perfect for extended family or rental opportunities.

Selections



Sahara Sands
Luxury Vinyl Plank



Perla Venata
Countertops
& Backsplash



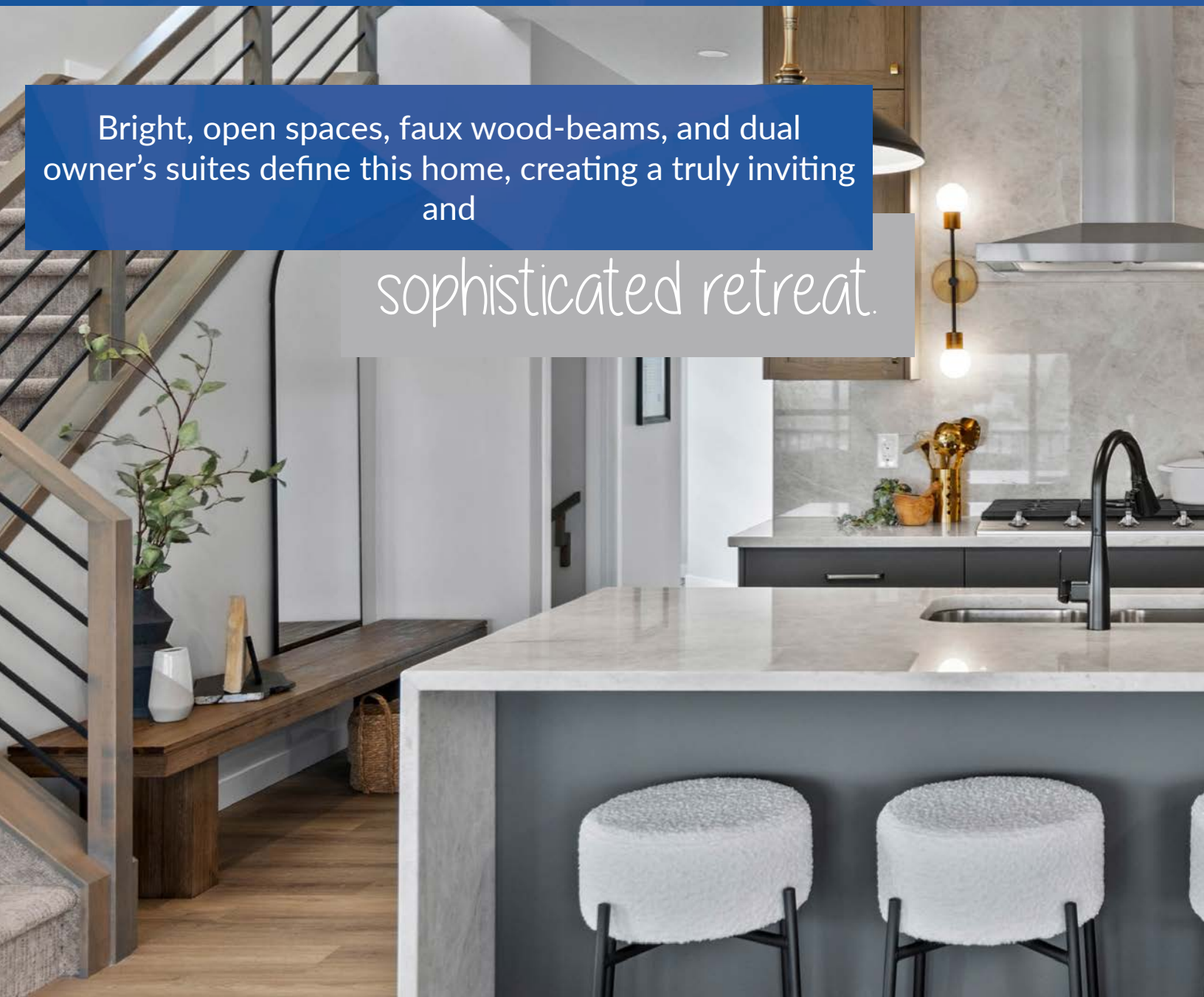
Cashmere Dusk
Lower Cabinets

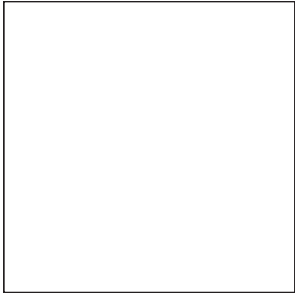


Salt of the Earth
Upper Cabinets

Bright, open spaces, faux wood-beams, and dual owner's suites define this home, creating a truly inviting and

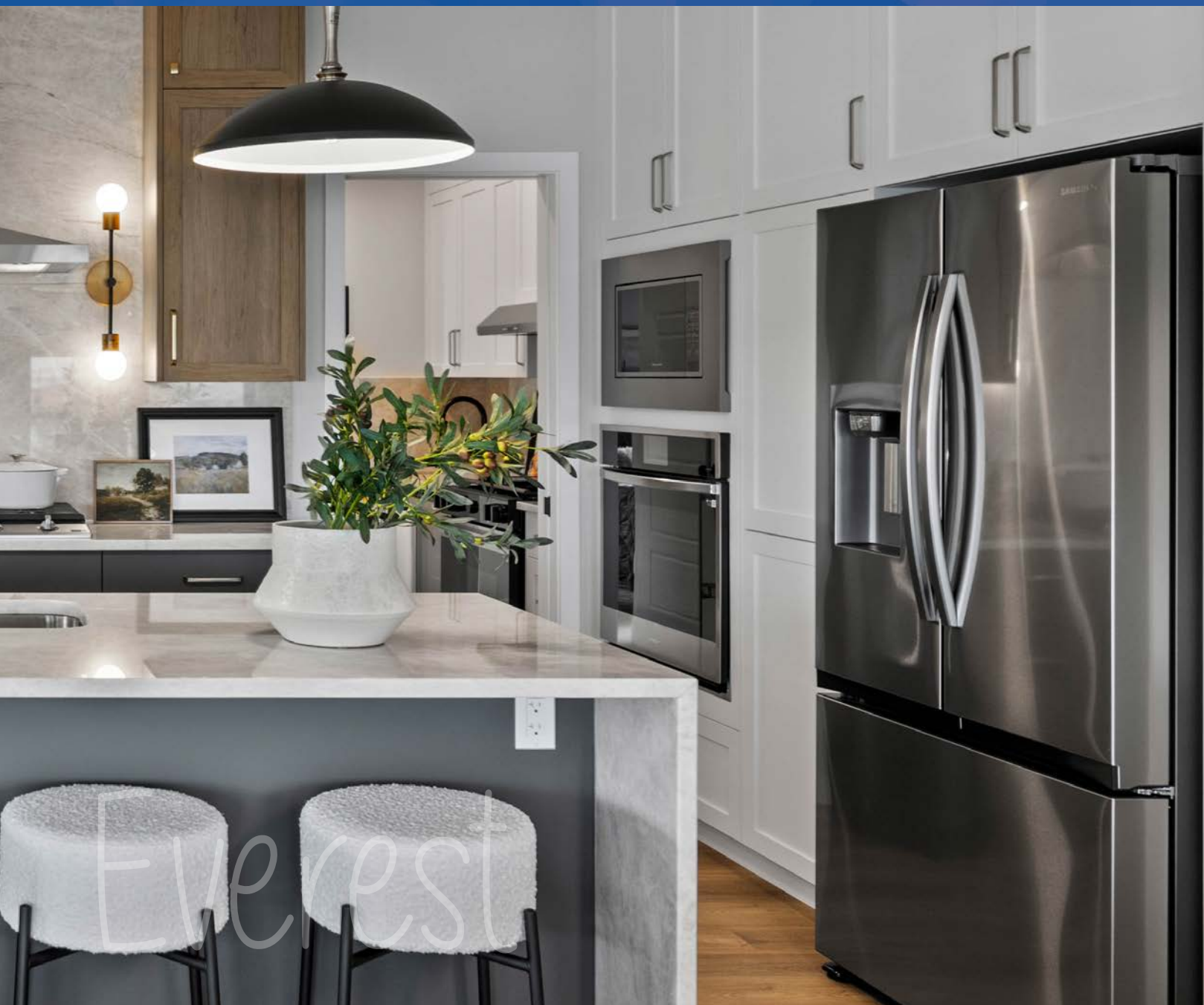
sophisticated retreat.





Experience the perfect blend of *quality*,
style, and *comfort* with McKee Homes.

Cotton Mist
Cabinets



4884 m
13271 km

Puncak Jaya

8848 m

7012 km

Mount

rest

5895 m

6166 km

Kiln

4017 m

9,6 km

Weissen

Allalin

Dena

2228 m

16587 km

Kosciuszko

Aco

5642 m

2730 km

Mount Elbrus

Dom

Designing these rooms became more than just decor. It was about perseverance and [reaching the summits](#) in our own lives.





McKEE HOMES