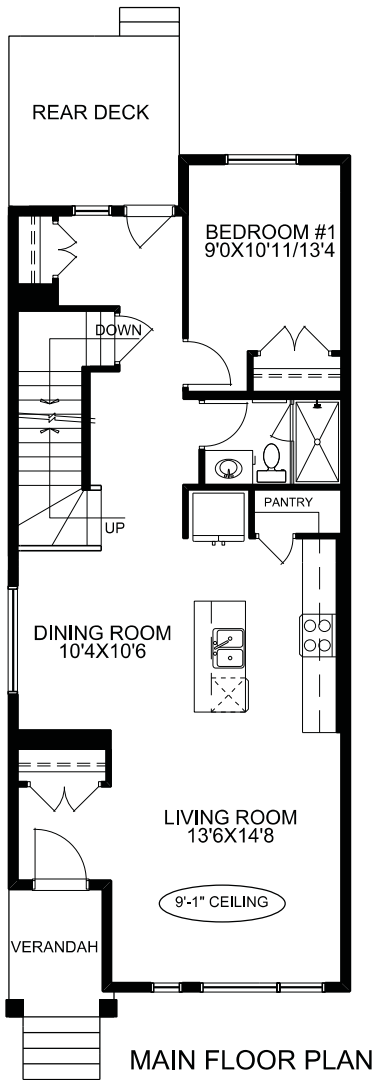
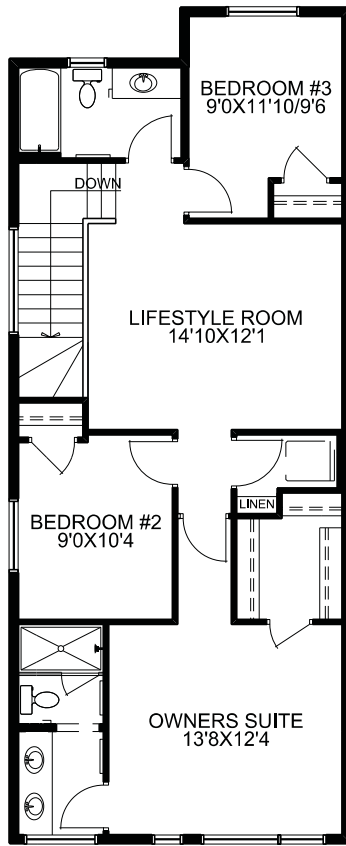




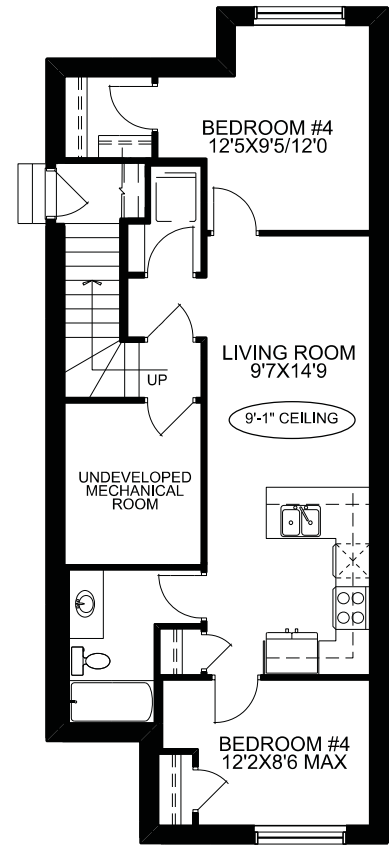
McKEE HOMES



MAIN FLOOR PLAN



UPPER FLOOR PLAN



OPTIONAL BASEMENT SUITE
674 SQ.FT.

SQUARE FOOTAGES

MAIN FLOOR -	917 SQ.FT.
UPPER FLOOR -	950 SQ.FT.
TOTAL -	1867 SQ.FT.

TECHNICAL SIZE = 1802 SQ.FT.
OVERALL WIDTH = 20'
OVERALL DEPTH
(EXCLUDING REAR DECK) = 49'0"

THE KATESBRIDGE
239 LEWISTON DRIVE