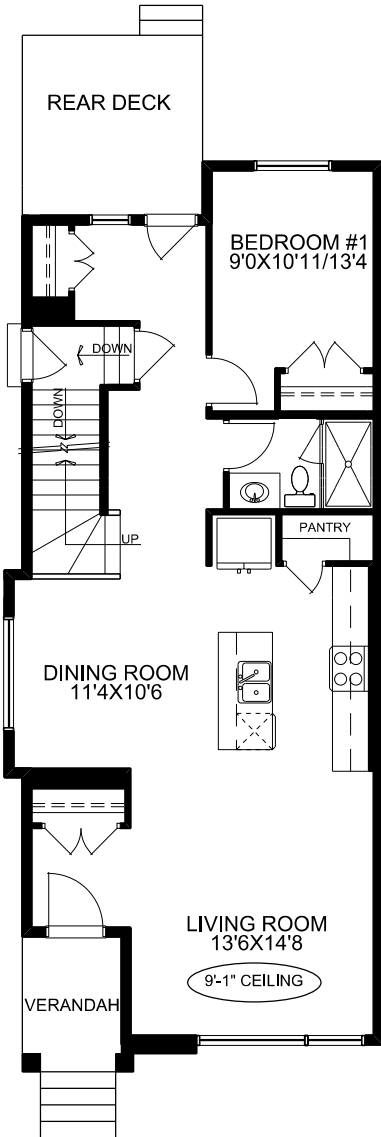
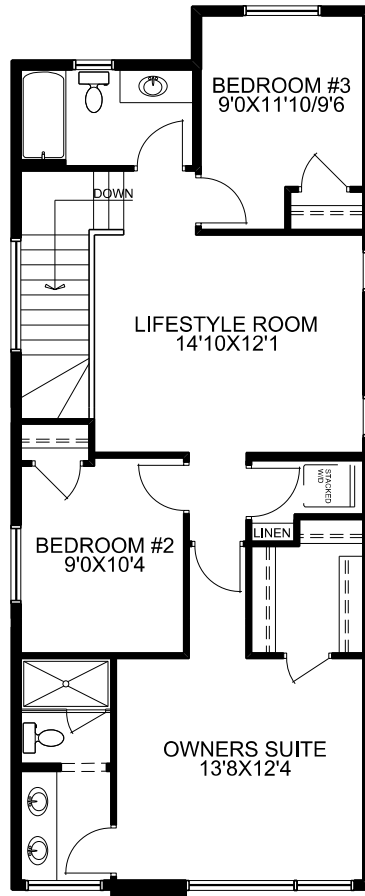




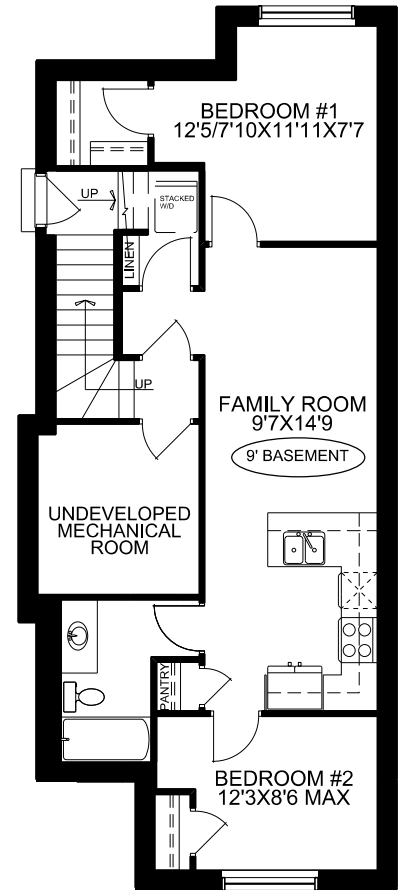
McKee Homes



MAIN FLOOR PLAN



UPPER FLOOR PLAN



OPTIONAL BASEMENT DEVELOPMENT
676 SQ.FT.

**THE KATESBRIDGE
LIFESTYLE II**
114 LEWISTON WAY

SQUARE FOOTAGES	
MAIN FLOOR -	929 SQ.FT.
UPPER FLOOR -	950 SQ.FT.
TOTAL -	1879 SQ.FT.

TECHNICAL SIZE = 1814 SQ.FT.
OVERALL WIDTH = 20'
OVERALL DEPTH
(EXCLUDING REAR DECK) = 49'