

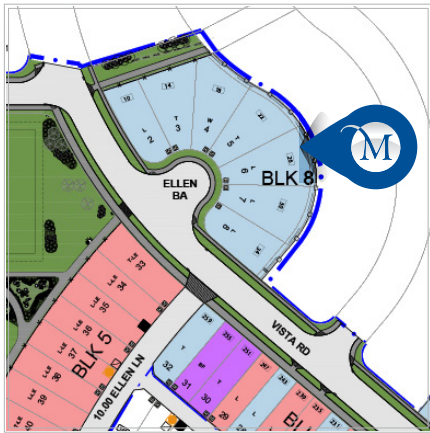


 2368 SQFT
  3
  2.5

Possession: Jan 2025

Price: See Website

# 26 Ellen Bay: Fernhill N



### Home Features:

- East facing backyard
- 9'0 main floor ceilings
- 22'0 x 22'0 garage with window
- Carriage court garage doors
- Sunshine Basement
- Lifestyle room upstairs – Main floor den/office
- Electric Fireplace
- Gas stove
- Upgraded tile shower and soaker tub in ensuite bathroom
- Upgraded double vanity sinks
- BBQ gas line to deck

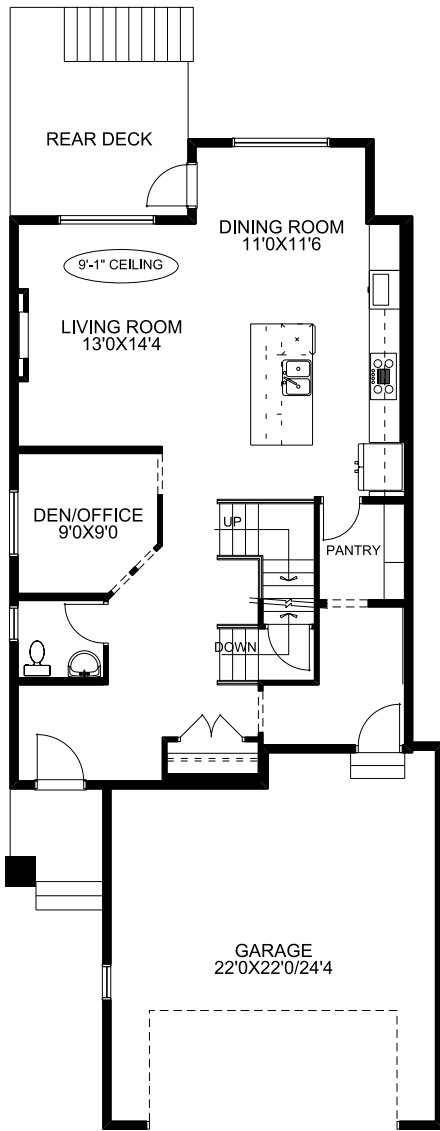


**McKEE HOMES**

# Floorplan

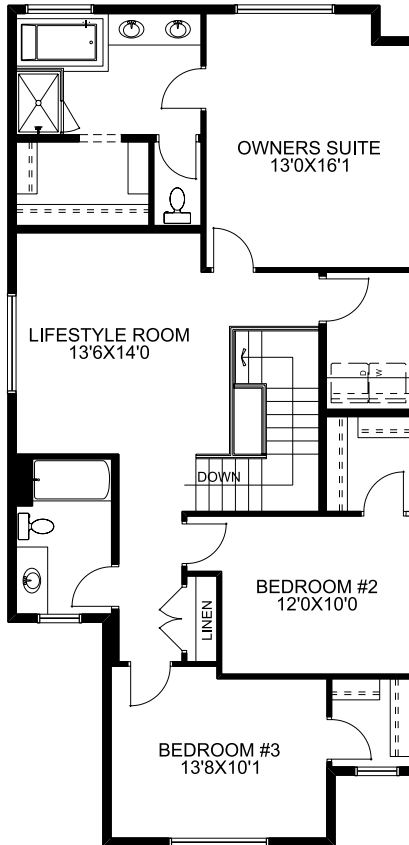
Main Floor

1100 SQFT



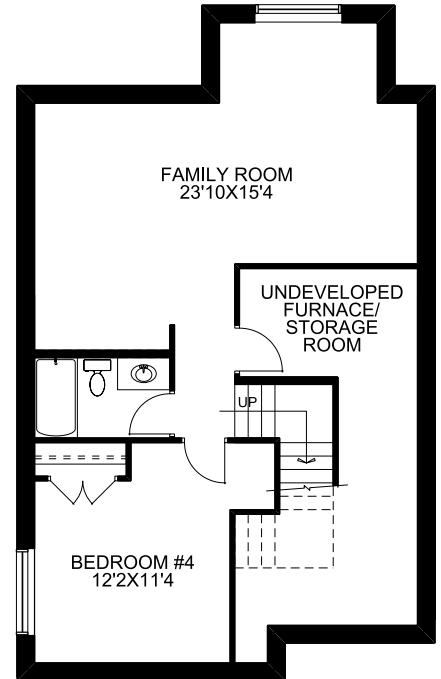
Upper Floor

1268 SQFT



Optional  
Basement Dev

643 SQFT



210 Vista Road.  
Crossfield, AB



Showhome Hours:  
Monday - Thursday 2PM - 8PM  
Friday - Closed  
Saturday - Sunday Noon - 5PM



**McKEE HOMES**

Airdrie's Family Builder for **36** Years

Leo Doiron  
Leo@mckeehomes.com



T 403 941-1115 C 403 804-5010