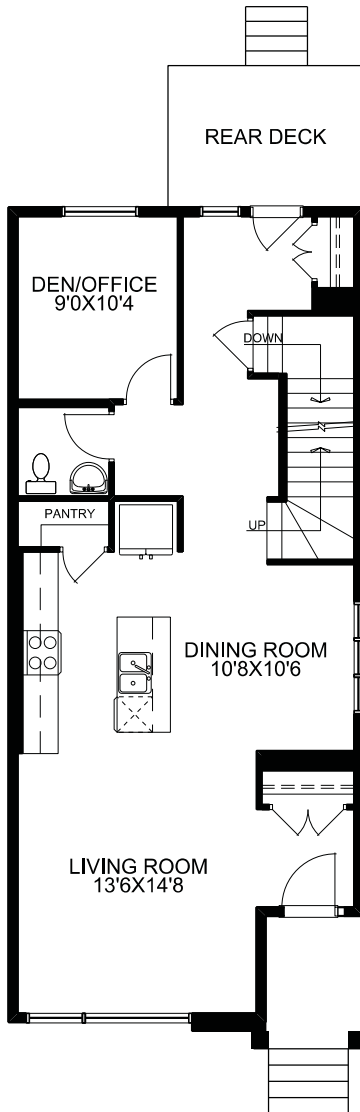
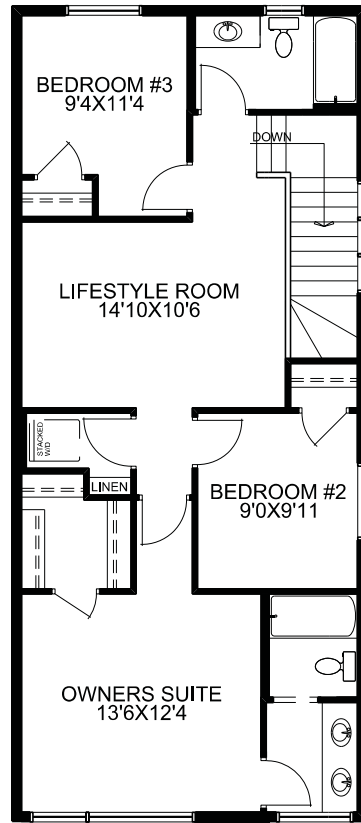


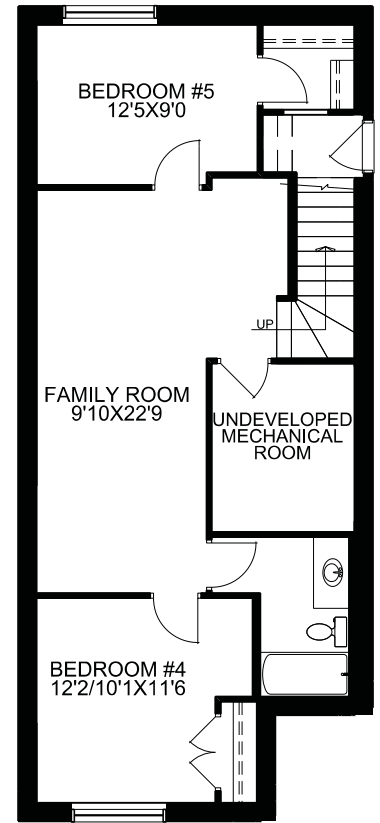
McKEE HOMES



MAIN FLOOR PLAN



UPPER FLOOR PLAN



OPTIONAL BASEMENT DEVELOPMENT  
647 SQ.FT.

**THE KATESBRIDGE**  
605 LAMBEAU LINK

SQUARE FOOTAGES	
MAIN FLOOR -	887 SQ.FT.
UPPER FLOOR -	920 SQ.FT.
<b>TOTAL -</b>	<b>1807 SQ.FT.</b>

TECHNICAL SIZE = 1742 SQ.FT.  
OVERALL WIDTH = 20'  
OVERALL DEPTH  
(EXCLUDING REAR DECK) = 47'6"