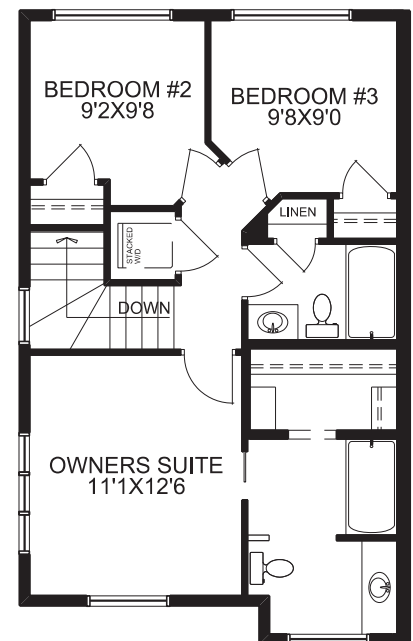


OPT'L LOWER DEV  
395 SQ.FT.

MAIN FLOOR PLAN



UPPER FLOOR PLAN

## OLD CASTLE

2169 BAYVIEW DRIVE



McKEE HOMES

### SQUARE FOOTAGES

MAIN FLOOR -	630 SQ.FT.
UPPER FLOOR -	635 SQ.FT.
TOTAL -	1265 SQ.FT.

TECHNICAL SIZE = 1225 SQ.FT.  
OVERALL WIDTH = 20'  
OVERALL DEPTH  
(EXCLUDING REAR DECK) = 36'