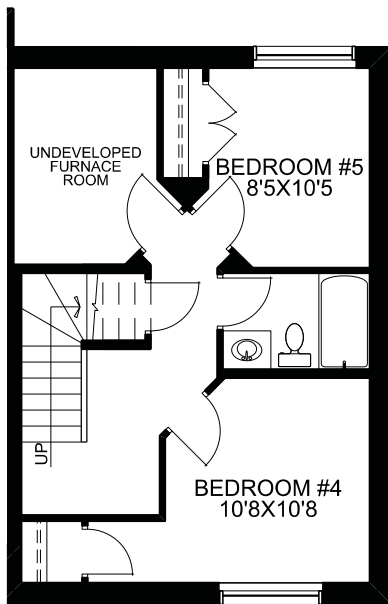
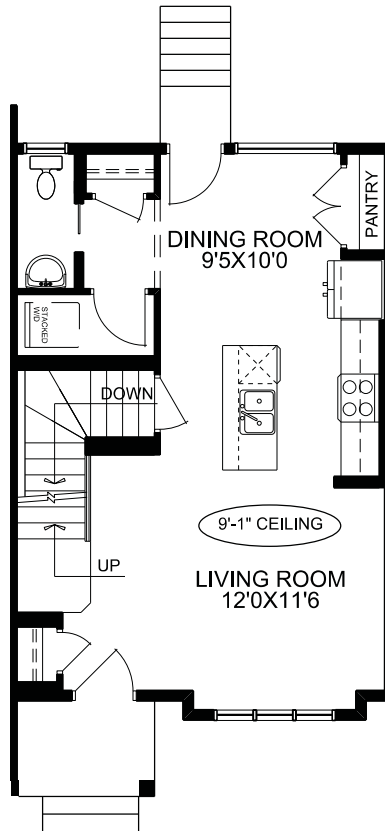




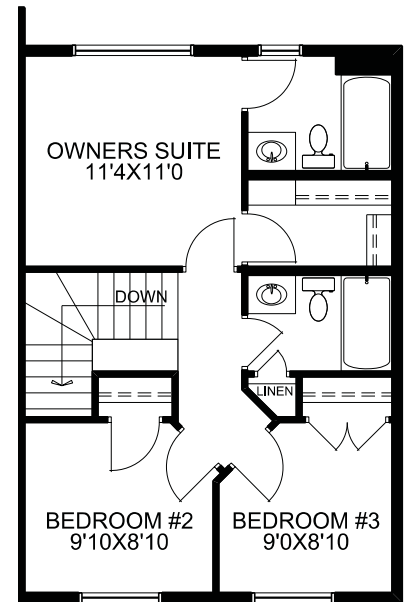
McKEE HOMES



OPT'L LOWER DEV  
391 SQ.FT.



MAIN FLOOR PLAN



UPPER FLOOR PLAN

# OLD CASTLE

2141 BAYVIEW DRIVE

SQUARE FOOTAGES	
MAIN FLOOR -	590 SQ.FT.
UPPER FLOOR -	580 SQ.FT.
TOTAL -	1170 SQ.FT.

TECHNICAL SIZE = 1125 SQ.FT.  
OVERALL WIDTH = 20'  
OVERALL DEPTH  
(EXCLUDING REAR DECK) = 34'