

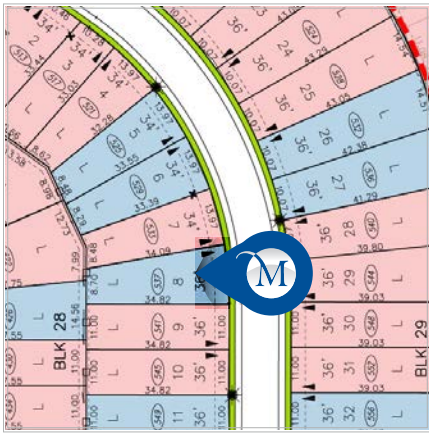


 2506 SQFT
  3
  2.5

Possession: Apr 2025

Price: See Website

537 Baywater Manor: Loughneagh V



Home Features:

- 3 bedroom 2.5 bath
- Fireplace
- 5 piece ensuite with tiled shower and soaker tub
- 200 amp panel
- Glass railing on stairwell
- 9'0 Main floor ceiling height
- 1 1/4 Quartz throughtout
- Walk through pantry



McKEE HOMES

Floorplan

Main Floor

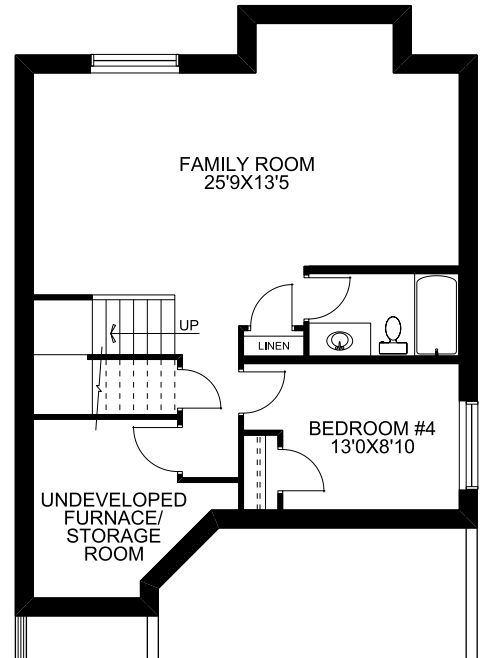
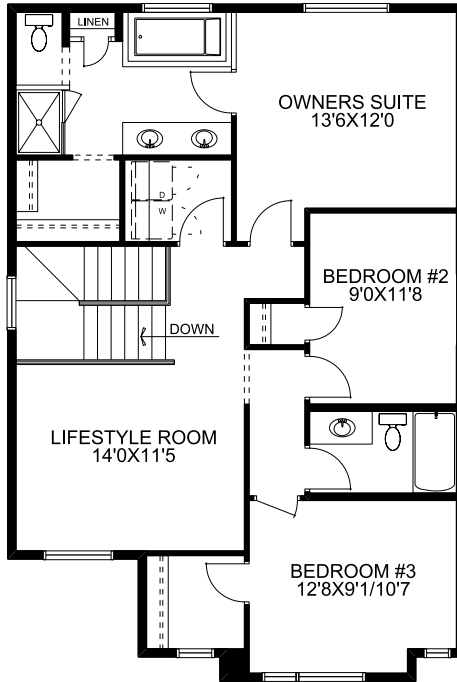
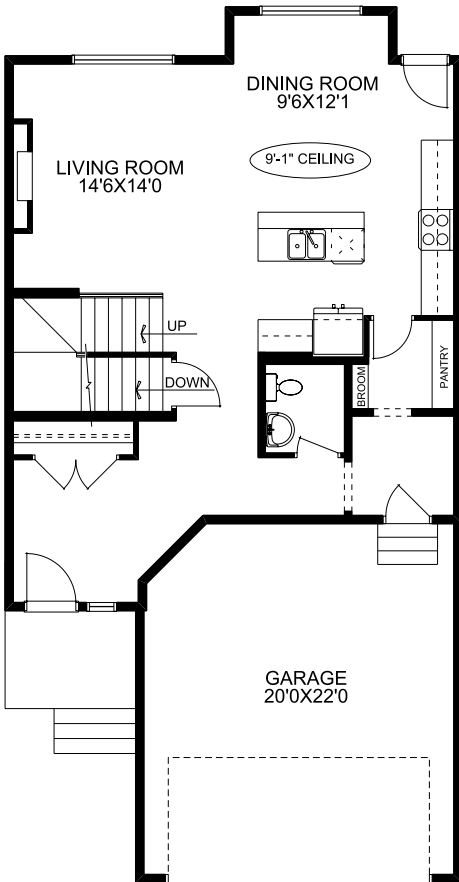
887 SQFT

Upper Floor

1090 SQFT

Optional
Basement Dev

621 SQFT



2647 & 2651 Bayside BLVD
Airdrie, AB



Showhome Hours:
Monday - Thursday 2PM - 8PM
Friday - Closed
Saturday - Sunday Noon - 5PM



McKEE HOMES

Airdrie's Family Builder for **36** Years

Karen Jackshaw

karen.jackshaw@mckeehomes.com



Or scan for more options

T 403 948-7881 C 403 358-9132