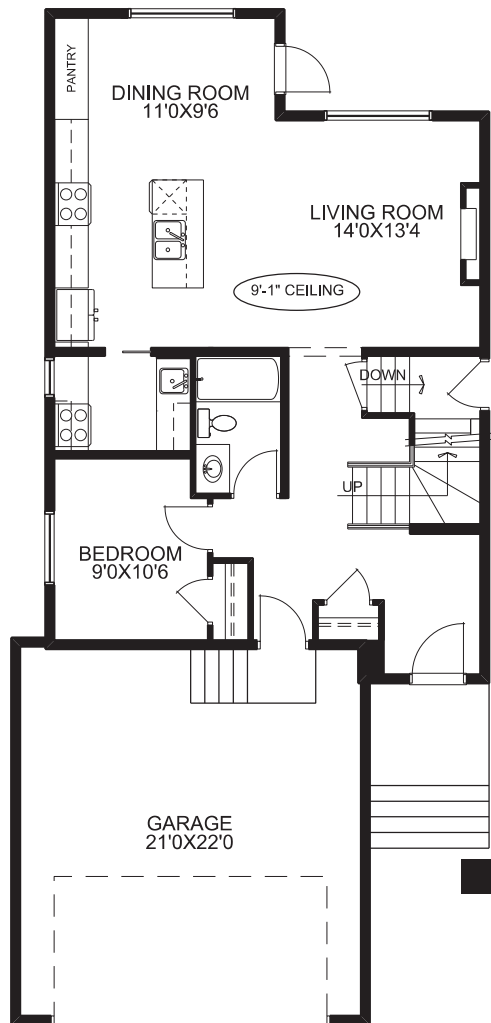
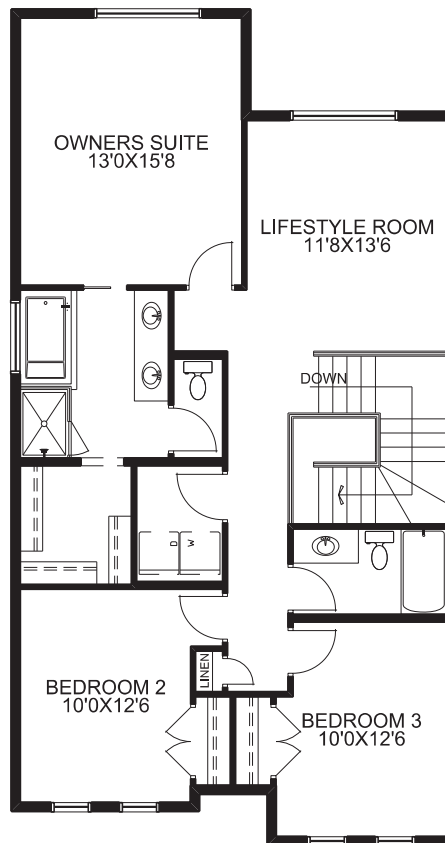




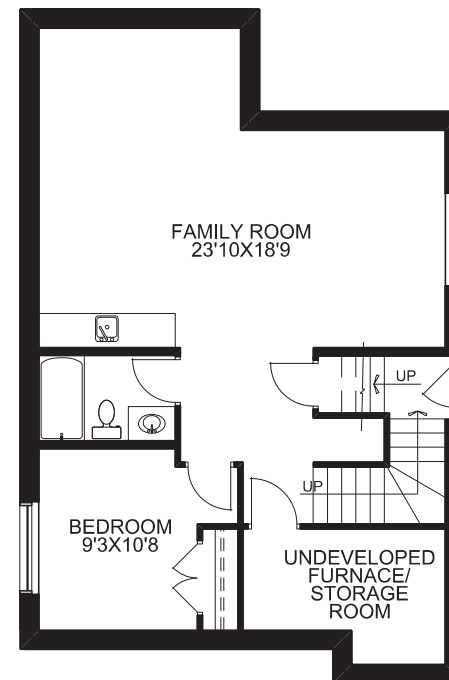
McKEE HOMES



MAIN FLOOR PLAN



UPPER FLOOR PLAN



OPTIONAL BASEMENT DEVELOPMENT
662 SQ.FT. DEVELOPED

THE PARKGATE N
3680 BAYSIDE BOULEVARD

SQUARE FOOTAGES

| | |
|---------------|-------------|
| MAIN FLOOR - | 918 SQ.FT. |
| UPPER FLOOR - | 1168 SQ.FT. |
| TOTAL - | 2086 SQ.FT. |
| GARAGE - | 462 SQ.FT. |

TECHNICAL SIZE = 1998 SQ.FT.
OVERALL WIDTH = 28'
OVERALL DEPTH
(EXCLUDING REAR DECK) = 59'-6"