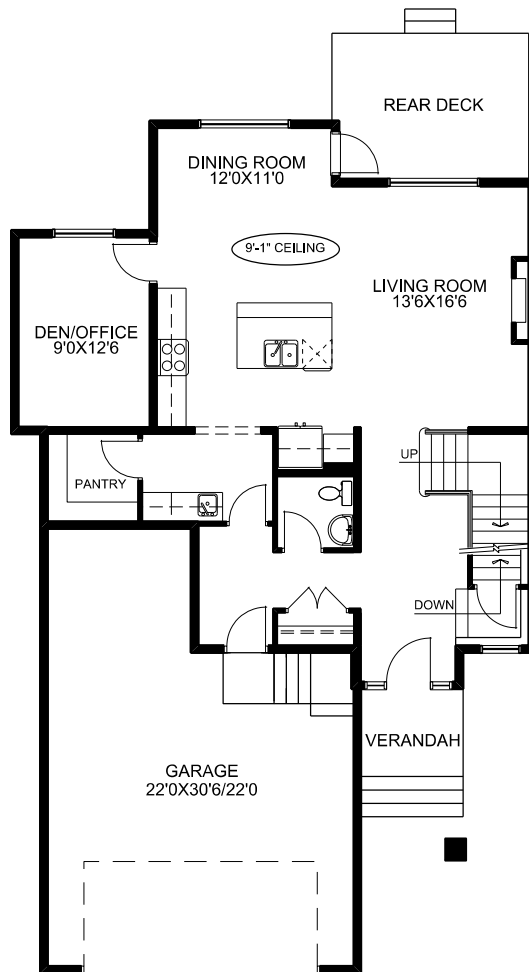
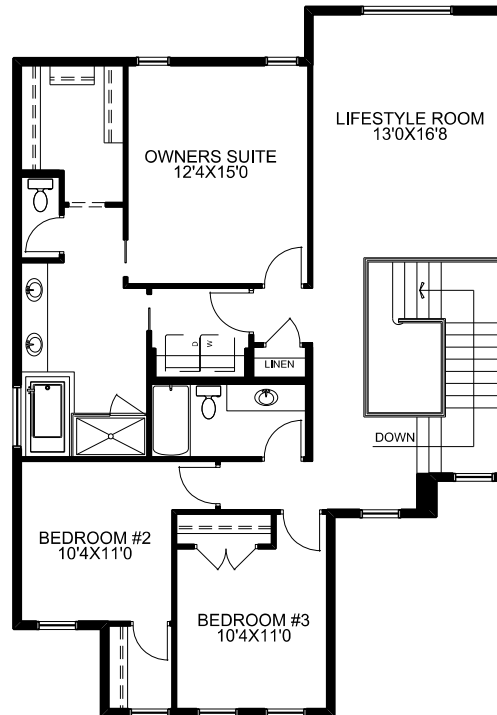




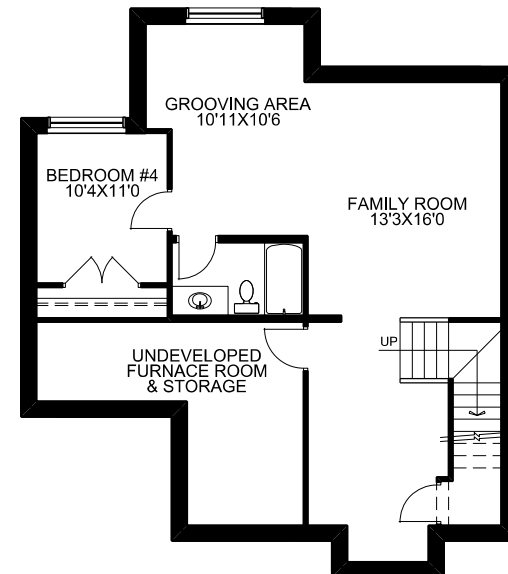
McKee Homes



MAIN FLOOR PLAN



UPPER FLOOR PLAN



OPTIONAL BASEMENT  
DEVELOPMENT PLAN  
698 SQ.FT. DEVELOPED

**THE STRANGFORD LOUGH II**  
1607 BAYWATER STREET

| SQUARE FOOTAGES |             |
|-----------------|-------------|
| MAIN FLOOR -    | 1090 SQ.FT. |
| UPPER FLOOR -   | 1243 SQ.FT. |
| TOTAL -         | 2333 SQ.FT. |

TECHNICAL SIZE = 2462 SQ.FT.  
OVERALL WIDTH = 36'  
OVERALL DEPTH  
(EXCLUDING REAR DECK) = 58'-6"