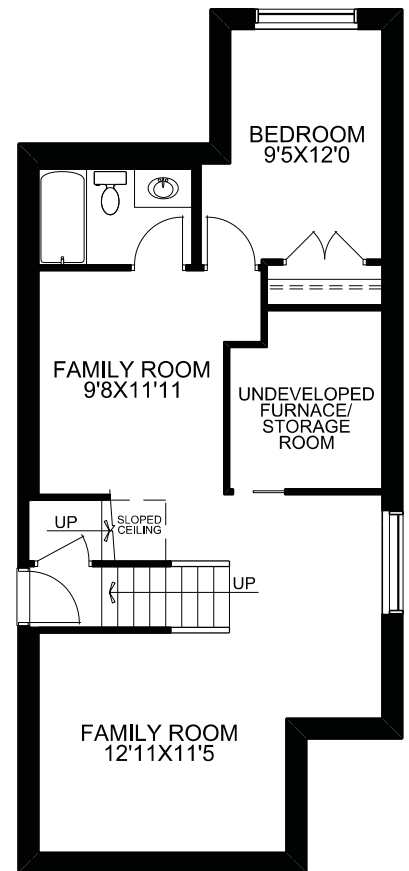
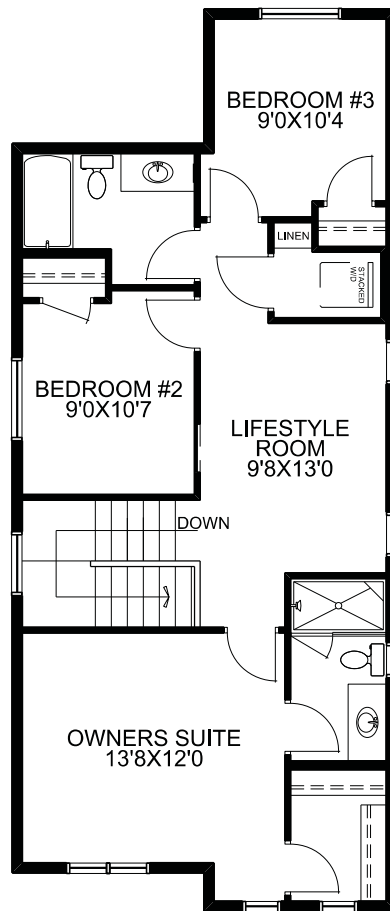
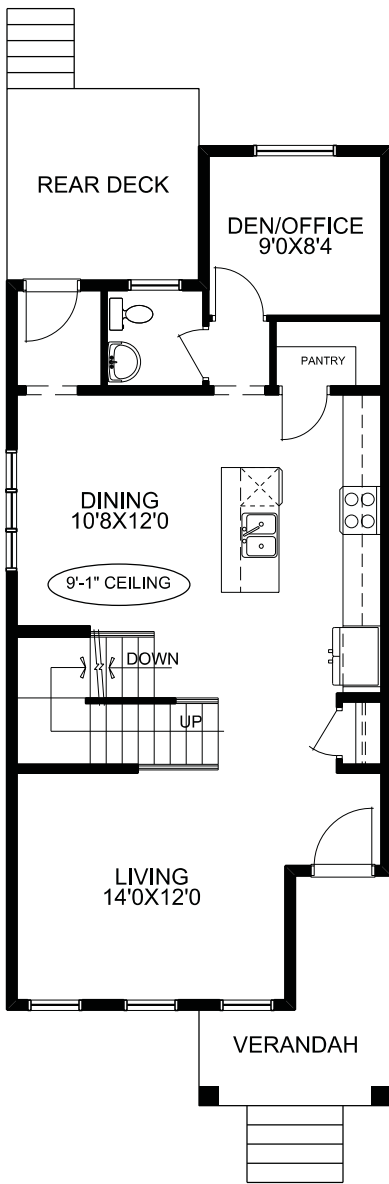




McKEE HOMES



UPPER FLOOR PLAN

OPTIONAL BASEMENT DEVELOPMENT

578 SQ.FT. DEVELOPED

MAIN FLOOR PLAN

# THE CASTLECOVE

1129 CHINOOK GATE BAY

**SQUARE FOOTAGES**

MAIN FLOOR -	795 SQ.FT.
UPPER FLOOR -	850 SQ.FT.
TOTAL -	1645 SQ.FT.

TECHNICAL SIZE = 1586 SQ.FT.  
 OVERALL WIDTH = 20'  
 OVERALL DEPTH  
 (EXCLUDING REAR DECK) = 50'