



2115
SQFT

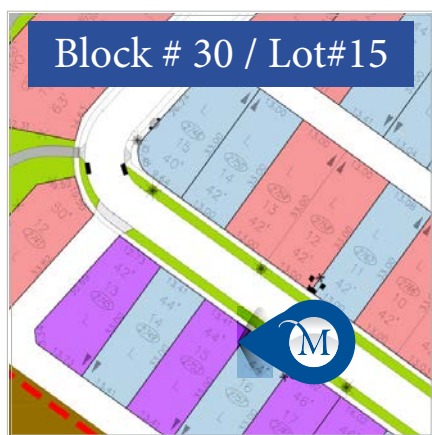
3

2.5

Possession: Immediate

Price: \$1,079,623.00

2753 Baywater Landing: Roscrea



Home Features:

- 9'0 Main floor ceiling height
Vaulted lifestyle room, stairs, & owners suite
- Included rear deck with black railing
- Living room gas Tasman fire-place with tile to ceiling surround
- Triple glazed upper & main floor windows
- Upgraded 5 piece ensuite with a walk-in closet; separate tub and shower
- TFL Tafisa Viva black slab cabinets
- Bright white 1 1/4" quartz countertops
- Twelve oaks vinyl plank flooring throughout main floor; excluding den



McKEE HOMES



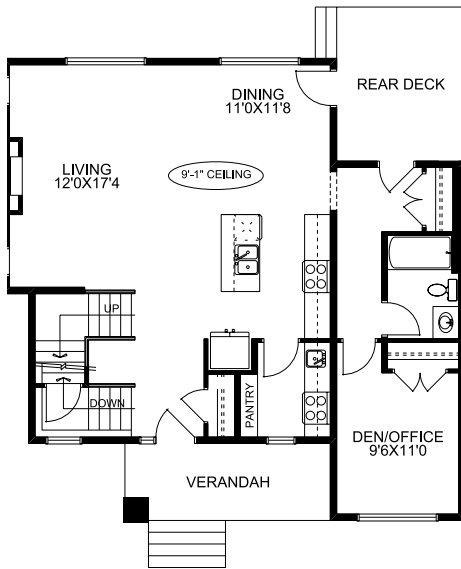
403-948-6595
mckeehomes.com

*Prices, specs, features, and images are subject to change and may not be indicative of included items.

Floorplan

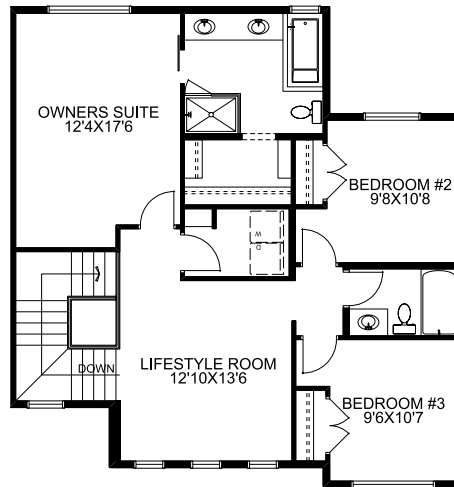
Main Floor

1040 SQFT



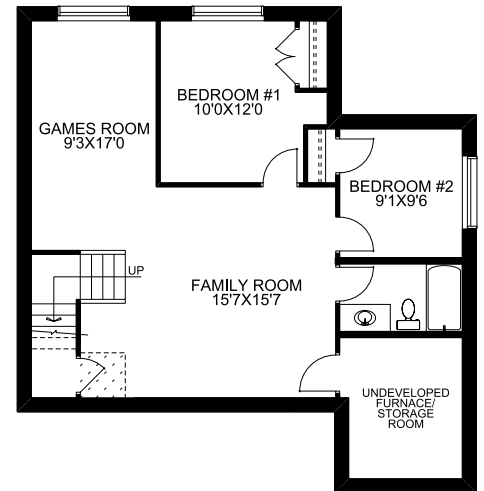
Upper Floor

1075 SQFT



Optional Basement Dev

748 SQFT



BuiltGreen



THE ALBERTA
**NEW HOME
WARRANTY**
PROGRAM

2647 & 2651 Bayside BLVD
Airdrie, AB



Showhome Hours:
Monday - Thursday 2PM - 8PM
Friday - Closed
Saturday - Sunday Noon - 5PM



McKEE HOMES

Airdrie's Family Builder for **36** Years

Karen Jackshaw

karen.jackshaw@mckeehomes.com



Or scan for more options

T 403 948-7881 C 403 358-9132