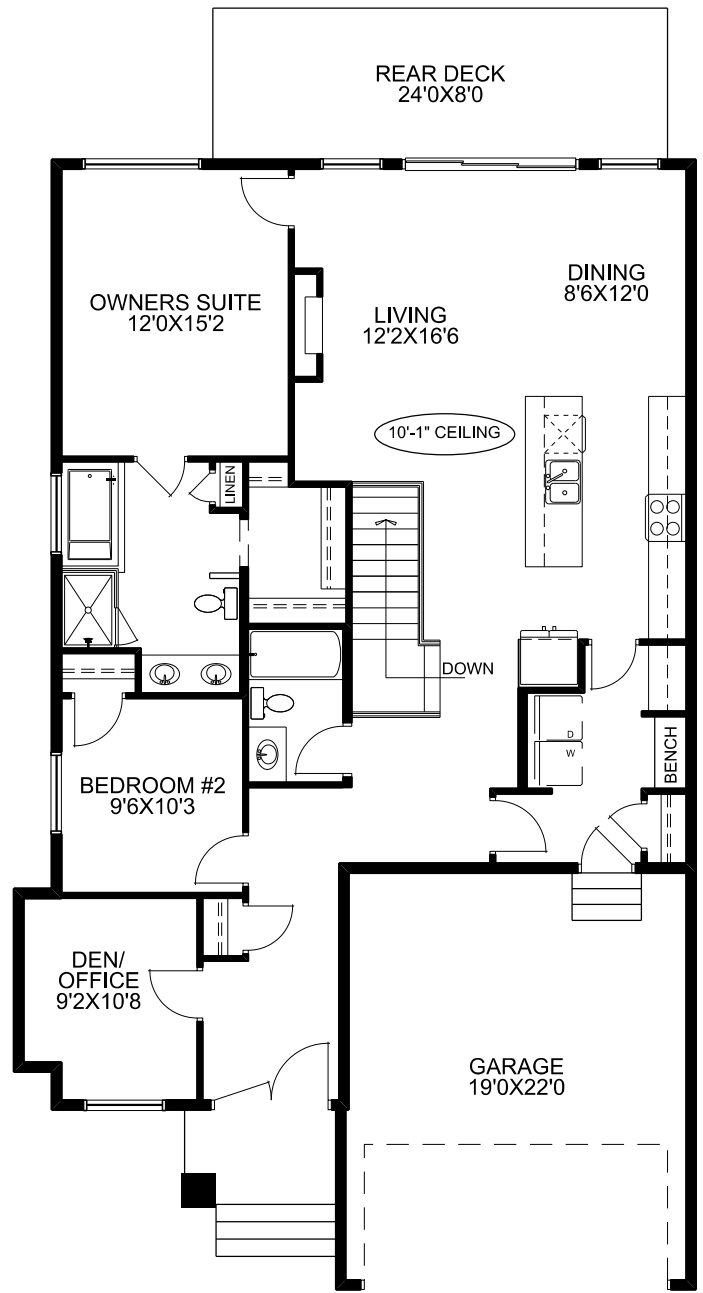


MAIN FLOOR PLAN
PROPEL



MAIN FLOOR PLAN
SIGNATURE

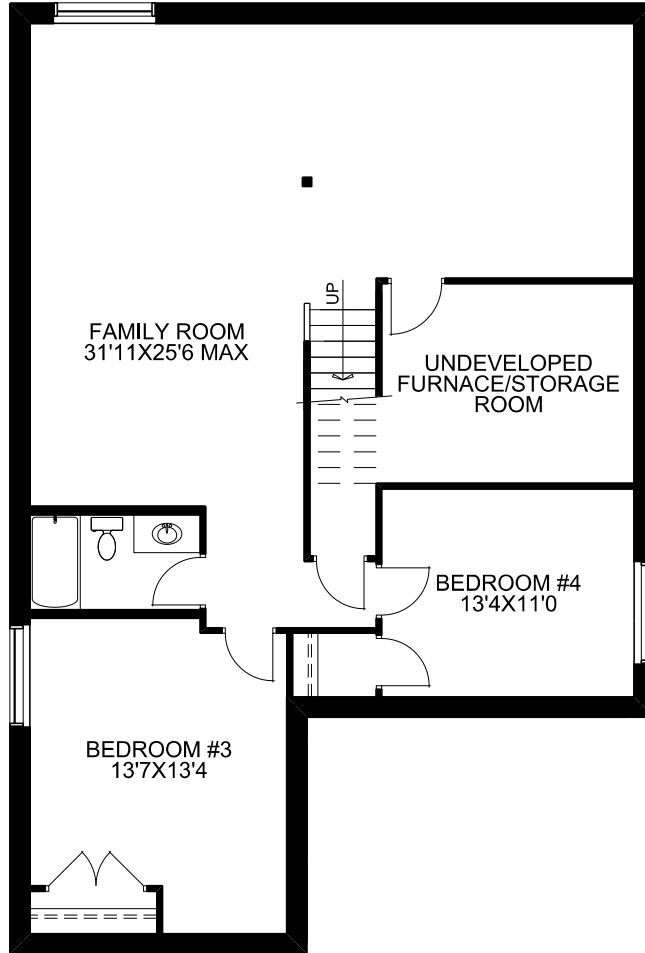
THE WEXFORD

| SQUARE FOOTAGES | |
|-----------------|-------------|
| MAIN FLOOR - | 1496 SQ.FT. |
| GARAGE - | 410 SQ.FT. |

TECHNICAL SIZE = 1496 SQ.FT.
 OVERALL WIDTH = 34'
 OVERALL DEPTH
 (EXCLUDING REAR DECK) = 59'-8"



McKEE HOMES



OPTIONAL
BASEMENT DEVELOPMENT
1152 SQ.FT.

THE WEXFORD



McKEE HOMES



CRAFTSMAN ELEVATION

THE WEXFORD



McKEE HOMES