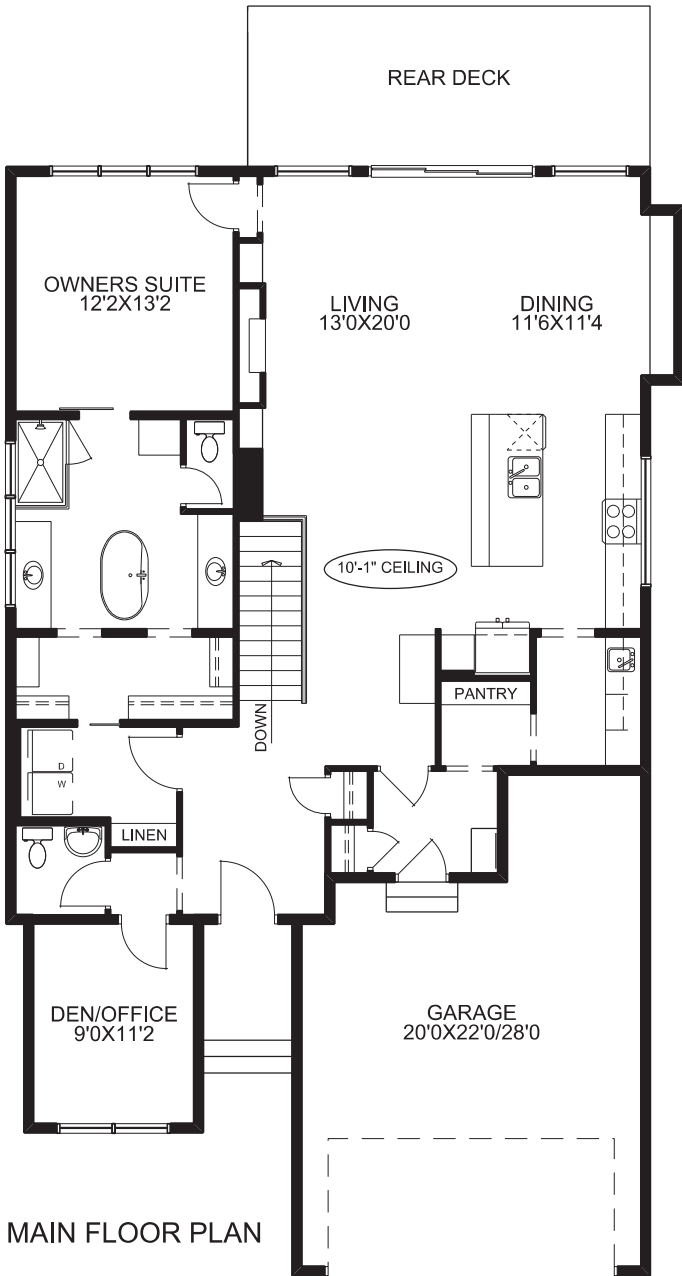
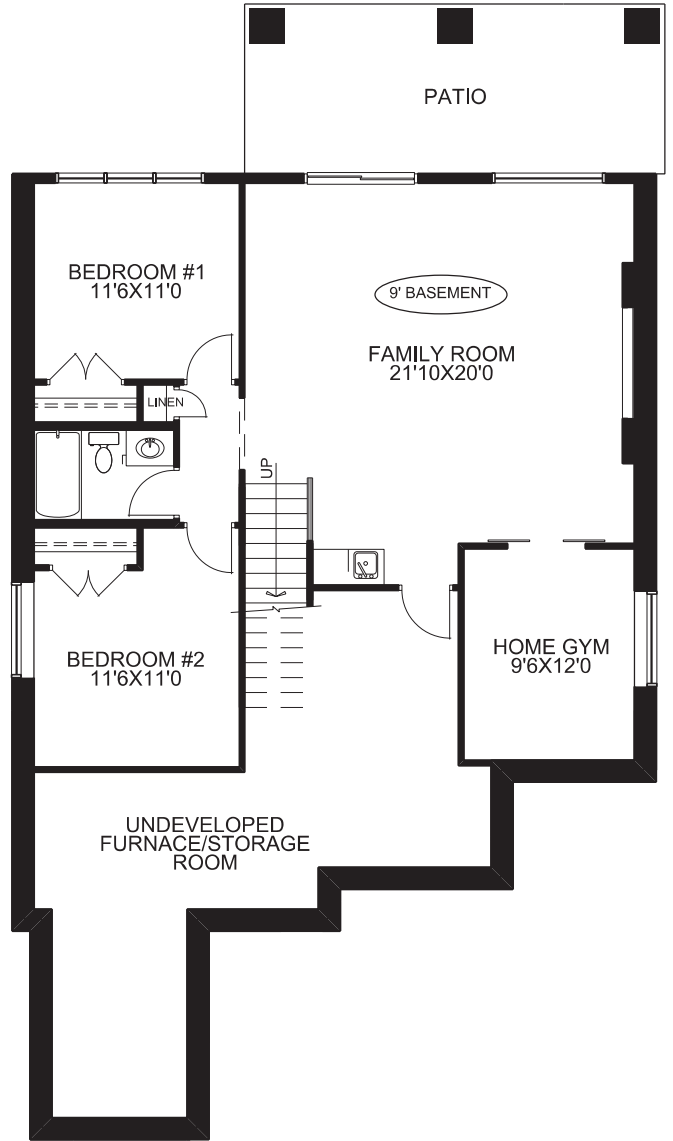




McKEE HOMES



MAIN FLOOR PLAN



BASEMENT DEVELOPMENT

THE KNIGHTSTOWN IV

2655 BAYSIDE BOULEVARD

SQUARE FOOTAGES

MAIN FLOOR -	1570 SQ.FT.
BASEMENT DEV. -	1004 SQ.FT.
GARAGE -	483 SQ.FT.

TECHNICAL SIZE = 1570 SQ.FT.
 OVERALL WIDTH = 36'
 OVERALL DEPTH
 (EXCLUDING REAR DECK) = 62'