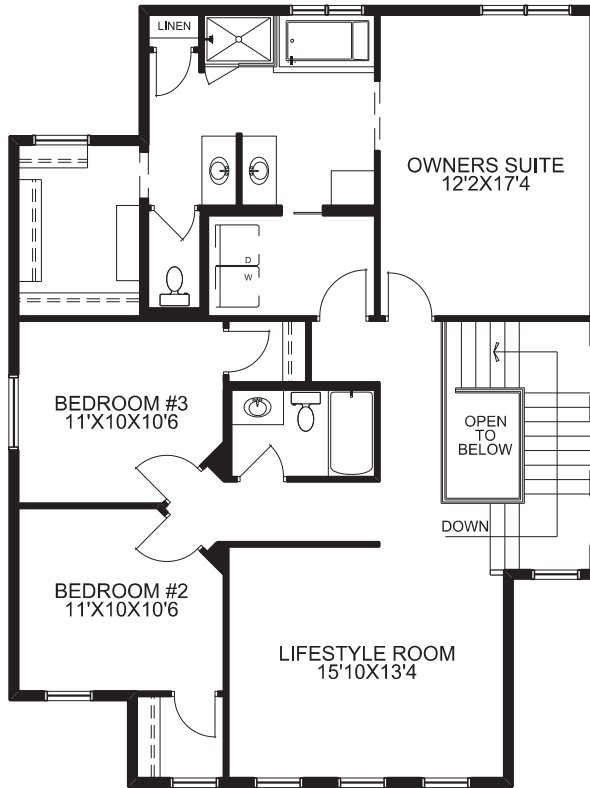
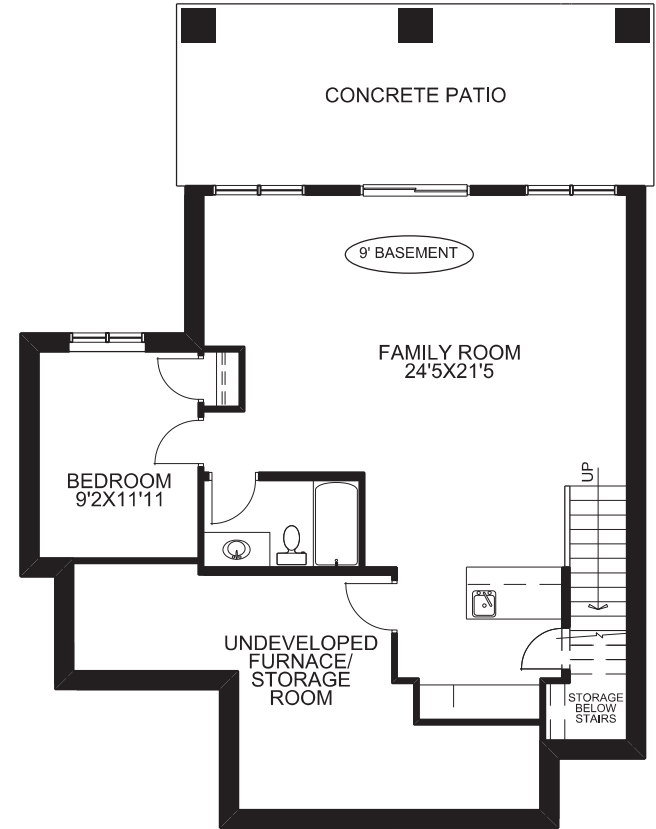


MAIN FLOOR PLAN



UPPER FLOOR PLAN



BASEMENT DEVELOPMENT

# THE STRANGFORD LOUGH V

2651 BAYSIDE BOULEVARD



McKEE HOMES

SQUARE FOOTAGES	
MAIN FLOOR -	1126 SQ.FT.
UPPER FLOOR -	1380 SQ.FT.
TOTAL -	2506 SQ.FT.
BASEMENT DEV. -	737 SQ.FT.
GARAGE -	560 SQ.FT.

TECHNICAL SIZE = 2387 SQ.FT.  
 OVERALL WIDTH = 34'  
 OVERALL DEPTH  
 (EXCLUDING REAR DECK) = 59'