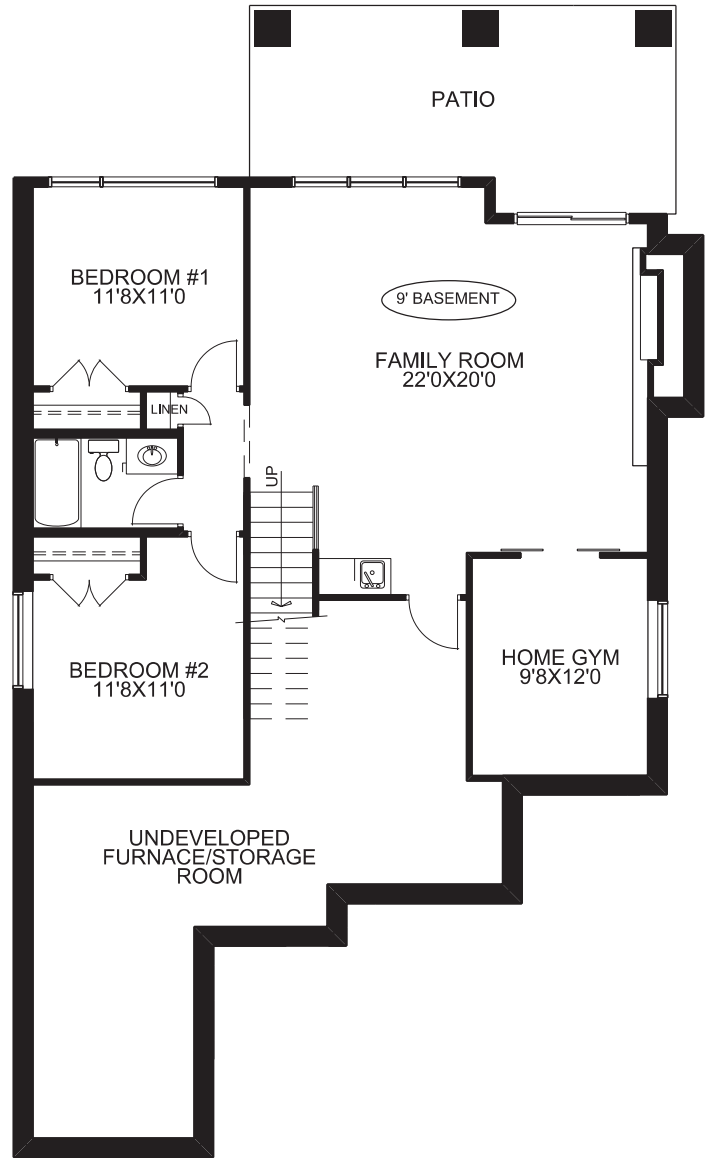


MAIN FLOOR PLAN



BASEMENT DEVELOPMENT

THE KNIGHTSTOWN IV

2647 BAYSIDE BOULEVARD



McKEE HOMES

SQUARE FOOTAGES	
MAIN FLOOR -	1577 SQ.FT.
BASEMENT DEV. -	984 SQ.FT.
GARAGE -	483 SQ.FT.

TECHNICAL SIZE = 1577 SQ.FT.
 OVERALL WIDTH = 36'
 OVERALL DEPTH
 (EXCLUDING REAR DECK) = 63'