



# Strangford Lough IV (4 Bedroom)

▶ Signature

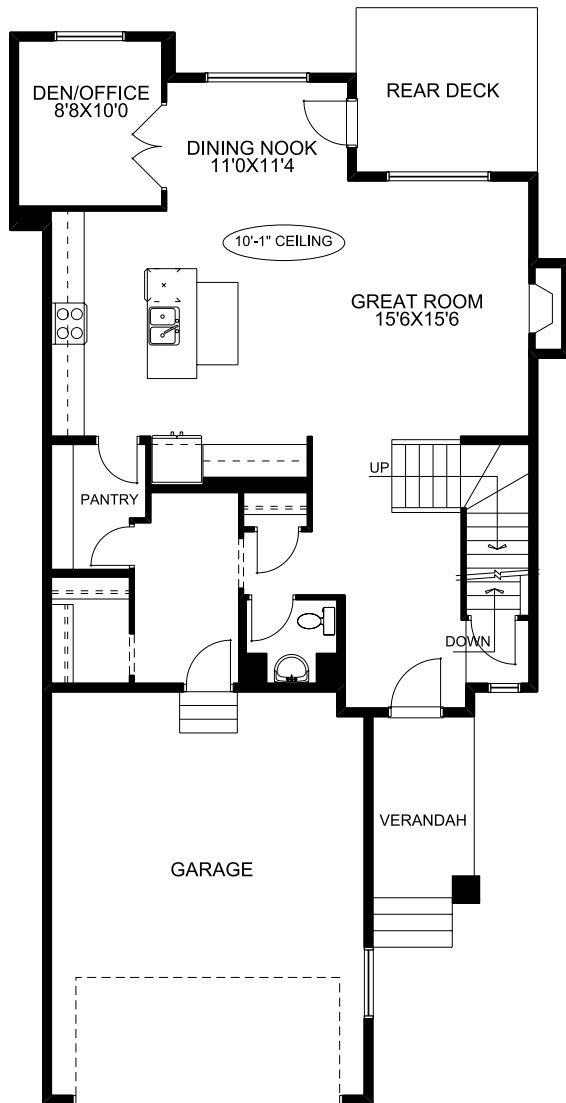
2689 sq. ft.

Main Floor: 1116 sq. ft.  
Upper Floor: 1446 sq. ft.  
Garage: 497 sq. ft.

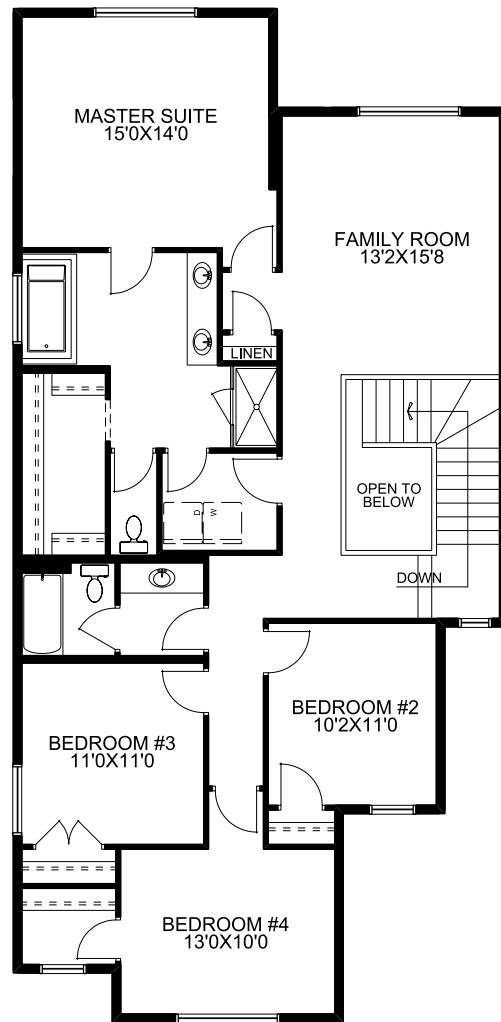
- Two storey
- 4 bedrooms, 2.5 baths
- Upper floor walk-through laundry off ensuite
- 9.0' ceilings main floor
- Walk-through pantry
- Main floor den/office
- Spacious living room at rear of main floor with

- added fireplace and cantilever
- Owners suite featuring a walk-in closet and ensuite with dual vanity, separate tub and walk-in shower
- Upper floor lifestyle room
- Included rear deck

Main Floor



Upper Floor



**McKEE HOMES**

Your family home. Our family business.