



Lough Neagh V Tandem (3 Bedroom)

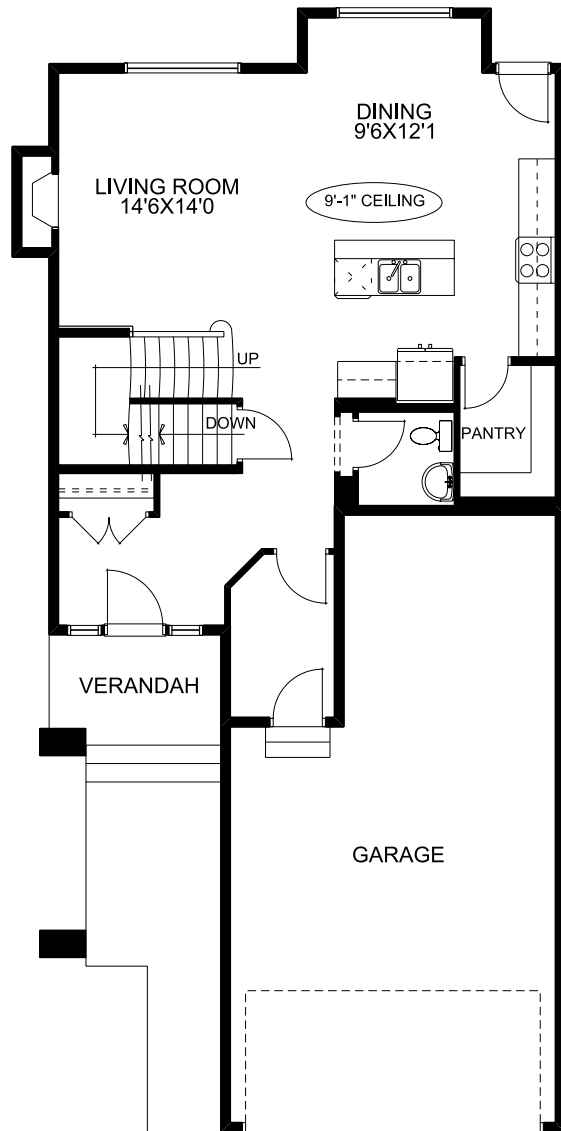
► Signature

1959 sq. ft.

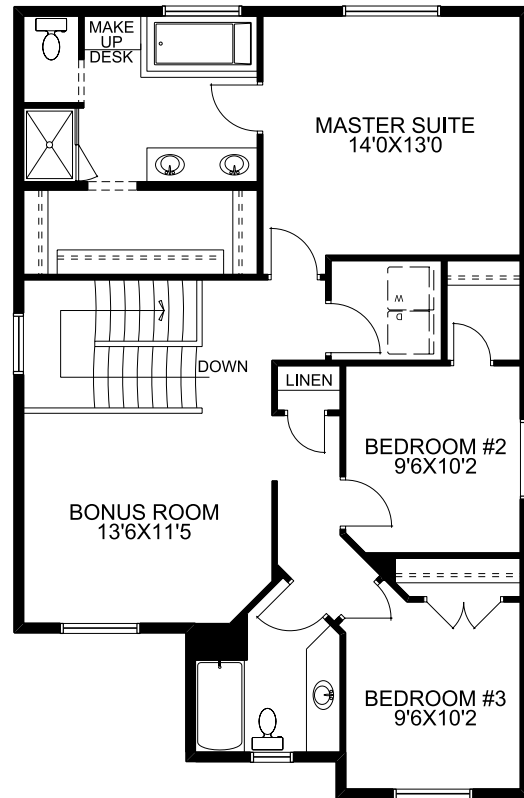
Main Floor: 855 sq. ft.
Upper Floor: 1104 sq. ft.
Garage: 549 sq. ft.

- Two storey
- 3 bedrooms, 2.5 baths
- Upper floor laundry
- 9.0' ceilings main floor
- Walk-in pantry
- Spacious living room at rear of main floor with added fireplace and cantilever
- Master suite featuring a walk-in closet and ensuite with dual vanity, make-up desk, separate tub and walk-in shower
- Front foyer closet
- Upper floor lifestyle room
- Included rear deck

Main Floor



Upper Floor



McKEE HOMES

Your family home. Our family business.