



Lough Neagh IV (3 Bedroom)

► Signature

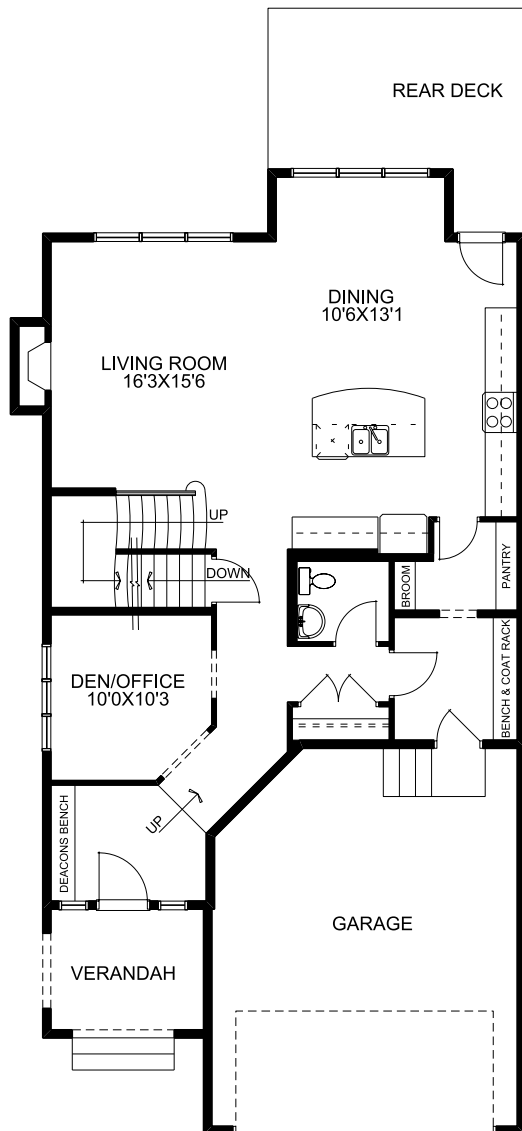
2666 sq. ft.

Main Floor: 1139 sq. ft.
Upper Floor: 1527 sq. ft.
Garage: 458 sq. ft.

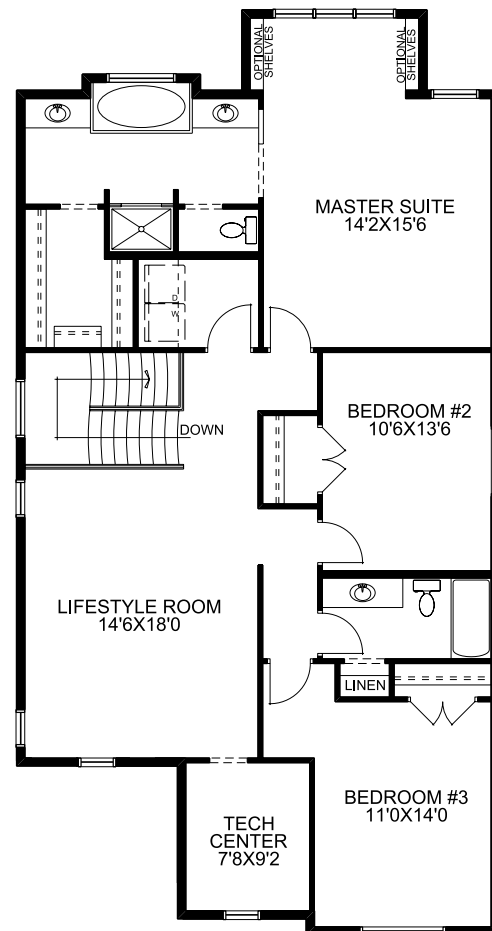
- Two storey
- 3 bedrooms, 2.5 baths
- Upper floor laundry
- 9.0' ceilings main floor
- Walk-through pantry
- Main floor den/office
- Spacious living room at rear of main floor with

- added fireplace and cantilever
- Master suite featuring a walk-in closet and ensuite with dual vanity, separate tub and walk-in shower
- Upper floor lifestyle room
- Included rear deck
- Upper floor tech center/toy storage

Main Floor



Upper Floor



McKEE HOMES

Your family home. Our family business.