

# Lough Neagh Vintage N

► Propel

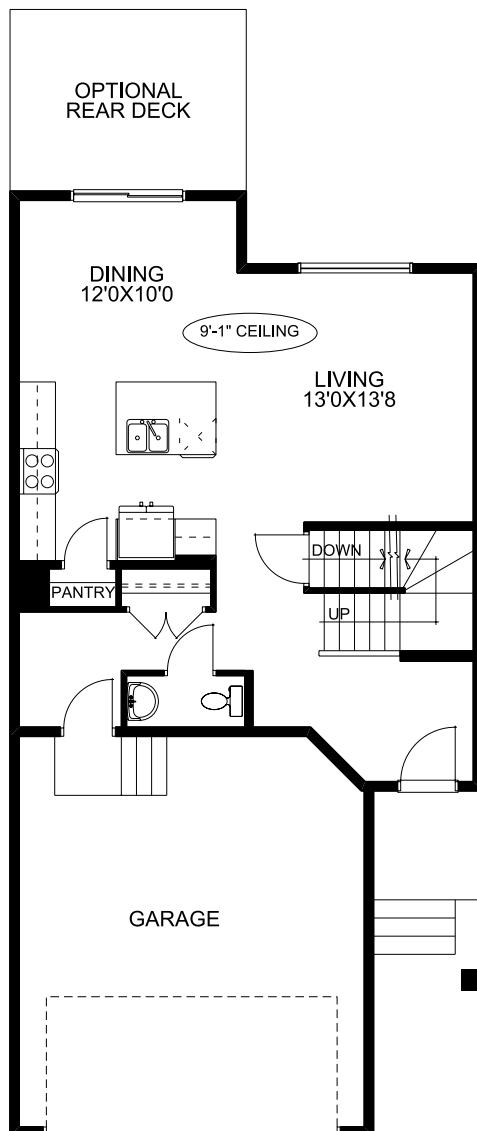


1586 sq. ft.

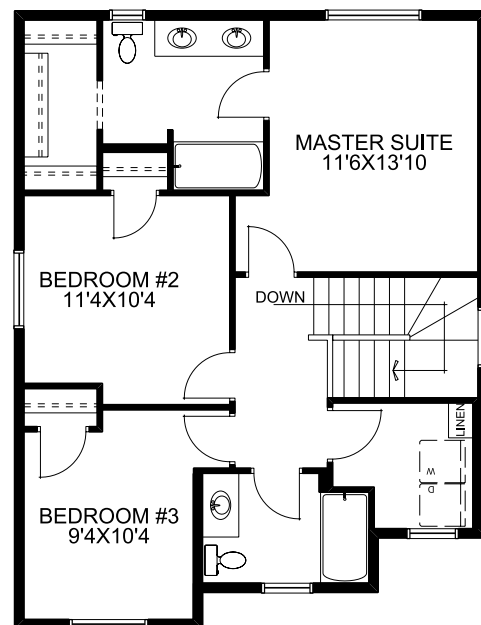
Main Floor: 752 sq. ft.  
Upper Floor: 834 sq. ft.  
Garage: 434 sq. ft.

- Two storey
- 3 bedrooms, 2.5 baths
- Upper floor laundry and linen closet
- 9.0' ceilings main floor
- Spacious living room at rear of main floor
- Master suite featuring a walk-in closet and ensuite with dual vanity
- Mudroom entrance with large closet

Main Floor



Upper Floor



**McKEE HOMES**

Your family home. Our family business.