

# Strangford Lough N

► Propel

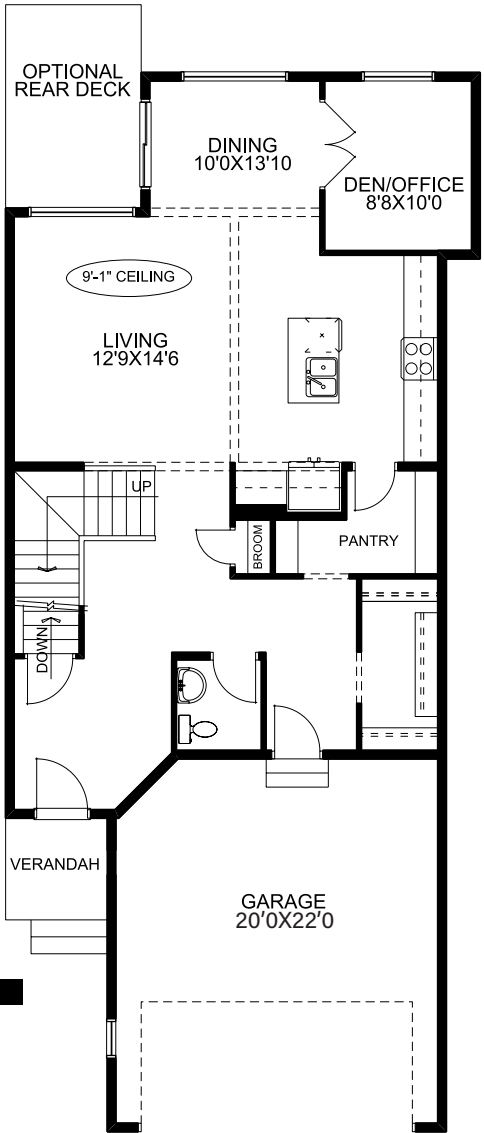


2369 sq. ft.

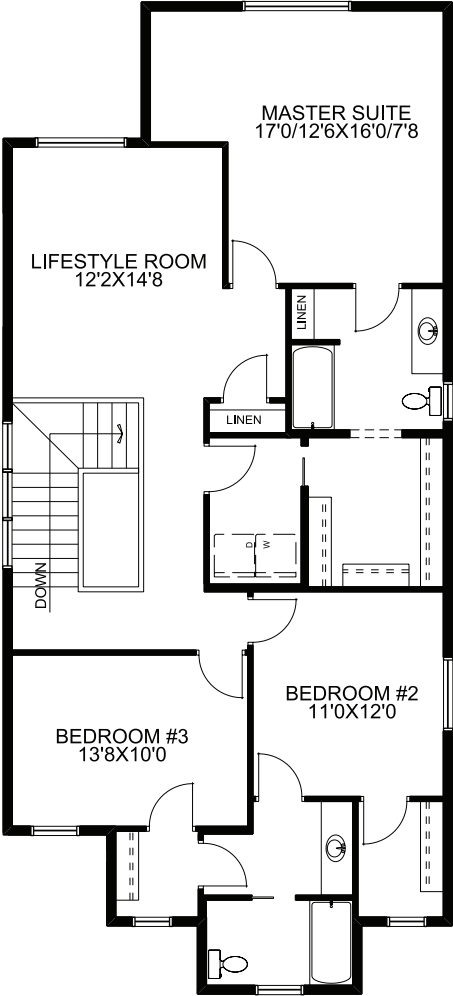
Main Floor: 1040 sq. ft.  
Upper Floor: 1329 sq. ft.  
Garage: 432 sq. ft.

- Two storey
- 3 bedrooms, 2.5 baths
- Upper floor laundry
- 9.0' ceilings main floor
- Walk-through pantry
- Main floor den/office
- Spacious living room at rear of main floor
- Master suite featuring a walk-in closet and ensuite
- Large mudroom closet
- Upper floor lifestyle room
- Bedrooms 2 and 3 feature walk-in closets and a Jack and Jill style bathroom

Main Floor



Upper Floor



## McKEE HOMES

Your family home. Our family business.

\*Marketing square footages. Available elevations are area dependant.

\*\*Plans subject to change. Please consult your sales person for details.